

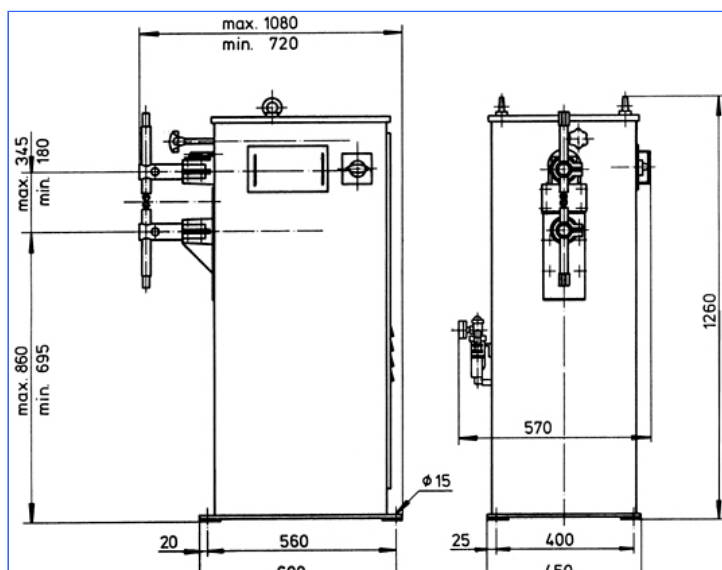


# PMP 3/16-35

Version: 01-2011

## Pneumatically operated, water cooled\* stationary spot welding machines

- depth of throat can be steplessly adjusted
- adjustable electrode force
- big vertical arm spacing
- with a compressed air maintenance unit
- with foot and main switch



	PMP 3/16 ECO	PMP 3/25 ECO	PMP 3/35 ECO
Welding performance*	2 + 2 mm	3 + 3 mm	3 + 3 mm
Nominal capacity (at 50% ED)	16 kVA	25 kVA	35 kVA
Supply power	43 kVA	65 kVA	83 kVA
Connection section	6 mm <sup>2</sup>	16 mm <sup>2</sup>	25 mm <sup>2</sup>
Fuse, delayed action	35 A	63 A	80 A
max. welding current	13.6 kA	16.8 kA	18,4 kA
Electrode force	17 - 300 daN	17 - 300 daN	17 - 300 daN
Number of steps	5	8	8
Depth of throat	160 - 520 mm	160 - 520 mm	160 - 520 mm
Electrode stroke	70 mm	70 mm	70 mm
Order-number	XM1.105.A03	XM1.113.C01	XM1.117.C01

\* The max. welding values quoted refer to sheet steel.

Delivery with welding control ECO-Weld 1000.  
Different welding controls can be used.

\*This kit does not include a water chiller!

**WMA is general distributor for NIMAK welding machines in Baden-Wuerttemberg.**

We reserve the right to make changes which are in the interest of technical progress.

© by WMA Schmidt & Bittner GmbH, Baumwaide 23, D-74360 Illfeld-Auenstein, Tel. +49 7062 9066-0, Fax +49 7062 9066-20  
info@wma-sb.de or wma-sb@t-online.de, http://www.wma-sb.de