



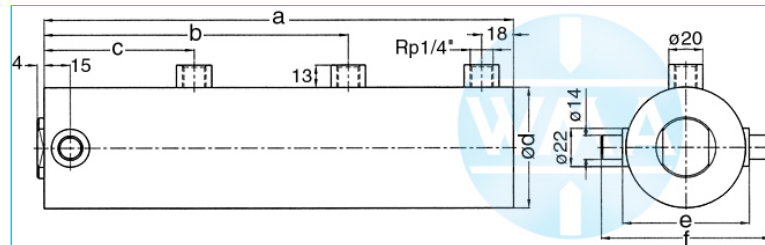
Welding cylinder

Pivot pin, with retract and working stroke

Version: 2011-01

unilateral air connection,
double-stage pressurized

undamped



Nominal size 038

S	WS	a	b	c	d	e	f	Force*	Order-number
36	30	369	254	126	48	50	75	0.2 kN	104.111.124.038.036.
50	20	379	254	126	48	50	75	0.2 kN	104.111.124.038.050.
65	30	429	294	146	48	50	75	0.2 kN	104.111.124.038.065.
80	20	439	294	146	48	50	75	0.2 kN	104.111.124.038.080.
100	40	509	354	176	48	50	75	0.2 kN	104.111.124.038.100.
130	30	519	354	176	48	50	75	0.2 kN	104.111.124.038.130.
150	40	569	395	196	48	50	75	0.2 kN	104.111.124.038.150.

S = retract, WS = working stroke, *at 1 bar pressure

Nominal size 044

S	WS	a	b	c	d	e	f	Force*	Order-number
36	30	369	254	126	55	58	83	0.28 kN	104.111.124.044.036.
50	20	379	254	126	55	58	83	0.28 kN	104.111.124.044.050.
65	30	429	294	146	55	58	83	0.28 kN	104.111.124.044.065.
80	20	439	294	146	55	58	83	0.28 kN	104.111.124.044.080.
100	40	509	354	176	55	58	83	0.28 kN	104.111.124.044.100.
130	30	519	354	176	55	58	83	0.28 kN	104.111.124.044.130.
150	40	569	395	196	55	58	83	0.28 kN	104.111.124.044.150.

S = retract, WS = working stroke, *at 1 bar pressure

Nominal size 058

S	WS	a	b	c	d	e	f	Force*	Order-number
36	30	369	254	126	70	74	99	0.5 kN	104.111.124.058.036.
50	20	379	254	126	70	74	99	0.5 kN	104.111.124.058.050.
65	30	429	294	146	70	74	99	0.5 kN	104.111.124.058.065.
80	20	439	294	146	70	74	99	0.5 kN	104.111.124.058.080.
100	40	509	354	176	70	74	99	0.5 kN	104.111.124.058.100.
130	30	519	354	176	70	74	99	0.5 kN	104.111.124.058.130.
150	40	569	395	196	70	74	99	0.5 kN	104.111.124.058.150.

S = retract, WS = working stroke, *at 1 bar pressure

Complete the Order-number:

Example: 104.111.124.058.036.??? No. Force connection (S.3)?? No. Cylinder rod (S.4)!

We reserve the right to make changes which are in the interest of technical progress.

© by WMA Schmidt & Bittner GmbH, Baumwaide 23, D-74360 Illfeld-Auenstein, Tel. +49 7062 9066-0, Fax +49 7062 9066-20

info@wma-sb.de or wma-sb@t-online.de, <http://www.wma-sb.de>

Cylinder-pivot pin-1



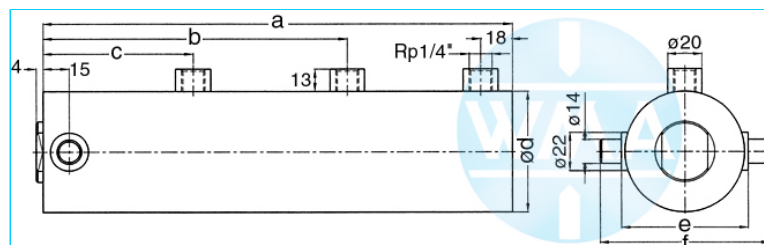
Welding cylinder

Pivot pin, with retract and working stroke

Version: 2011-01

unilateral air connection,
double-stage pressurized

damped independent of stroke



Nominal size 044

S	WS	a	b	c	d	e	f	Force*	Order-number
36	30	369	254	126	55	58	83	0.28 kN	104.111.125.044.036.
50	20	379	254	126	55	58	83	0.28 kN	104.111.125.044.050.
65	30	429	294	146	55	58	83	0.28 kN	104.111.125.044.065.
80	20	439	294	146	55	58	83	0.28 kN	104.111.125.044.080.
100	40	509	354	176	55	58	83	0.28 kN	104.111.125.044.100.
130	30	519	354	176	55	58	83	0.28 kN	104.111.125.044.130.
150	40	569	395	196	55	58	83	0.28 kN	104.111.125.044.150.

S = retract, WS = working stroke, *at 1 bar pressure

Nominal size 058

S	WS	a	b	c	d	e	f	Force*	Order-number
36	30	369	254	126	70	74	99	0.5 kN	104.111.125.058.036.
50	20	379	254	126	70	74	99	0.5 kN	104.111.125.058.050.
65	30	429	294	146	70	74	99	0.5 kN	104.111.125.058.065.
80	20	439	294	146	70	74	99	0.5 kN	104.111.125.058.080.
100	40	509	354	176	70	74	99	0.5 kN	104.111.125.058.100.
130	30	519	354	176	70	74	99	0.5 kN	104.111.125.058.130.
150	40	569	395	196	70	74	99	0.5 kN	104.111.125.058.150.

S = retract, WS = working stroke, *at 1 bar pressure

Complete the Order-number:

Example: 104.111.125.058.036.??? No. Force connection (S.3)?? No. Cylinder rod (S.4)!

We reserve the right to make changes which are in the interest of technical progress.

© by WMA Schmidt & Bittner GmbH, Baumwaide 23, D-74360 Ilsfeld-Auenstein, Tel. +49 7062 9066-0, Fax +49 7062 9066-20

info@wma-sb.de or wma-sb@t-online.de, <http://www.wma-sb.de>

Cylinder-pivot pin-2



Welding cylinder

Pivot pin, with retract and working stroke

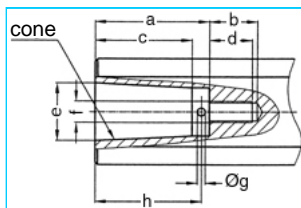
Version: 2011-01

Force connection

Write the number (with point) from the selected Force connection direct behind the Order-number of the cylinder and complete the whole Order-number with the chosen number of the Cylinder rod.

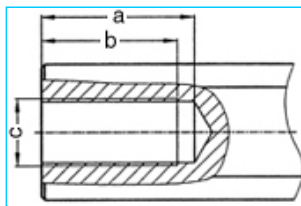
Example: 104.111.125.058.036.401.?? No. Cylinder rod (S.4)

Internal cone



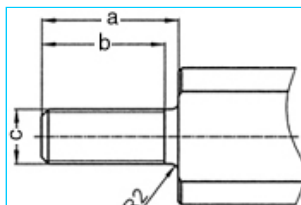
a	b	c	d	e	cone	f	g	h	No.
33	18	27.0	16	17.780	MK2	M8	3	30	101.
42	18	35.5	16	21.806	MK3	M8	3	39	102.
42	18	35.5	16	21.750	1:10	M8	3	39	103.

Female thread



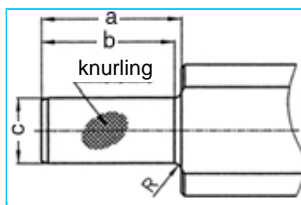
a	b	c	No.
45	40	M20 x 1.5	201.
62	58	M20 x 1.5	202.

Male thread



a	b	c	No.
40	36	M16 x 1.5	301.
40	36	M20 x 1.5	302.
40	36	M24 x 1.5	303.

Knurl



a	b	c	Knurling	R	No.
42	40	20 ¹⁷	1 x 0.2 DIN 82	2	401.
42	42	25 ¹⁷	1 x 0.2 DIN 82	-	402.

We reserve the right to make changes which are in the interest of technical progress.

© by WMA Schmidt & Bittner GmbH, Baumwaide 23, D-74360 Illfeld-Auenstein, Tel. +49 7062 9066-0, Fax +49 7062 9066-20

info@wma-sb.de or wma-sb@t-online.de, <http://www.wma-sb.de>

Cylinder-pivot pin-3



Welding cylinder

Pivot pin, with retract and working stroke

Version: 2011-01

Cylinder rod

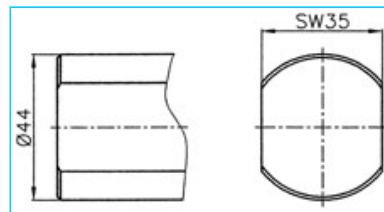
flattened and rotation locked

Complete the Order-number with the selected number of the chosen cylinder rod.

Example: 104.111.125.058.036.401.02

For piston diameter

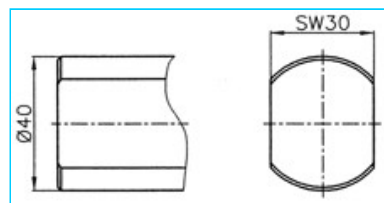
70, 80, 90



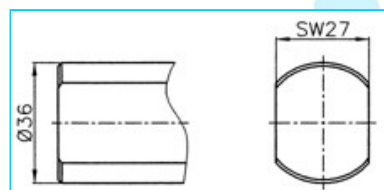
No. 00

For piston diameter

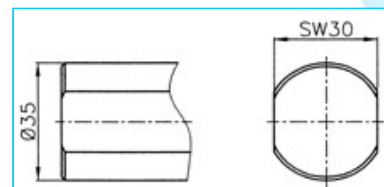
38, 44, 58



No. 01



No. 02



No. 03

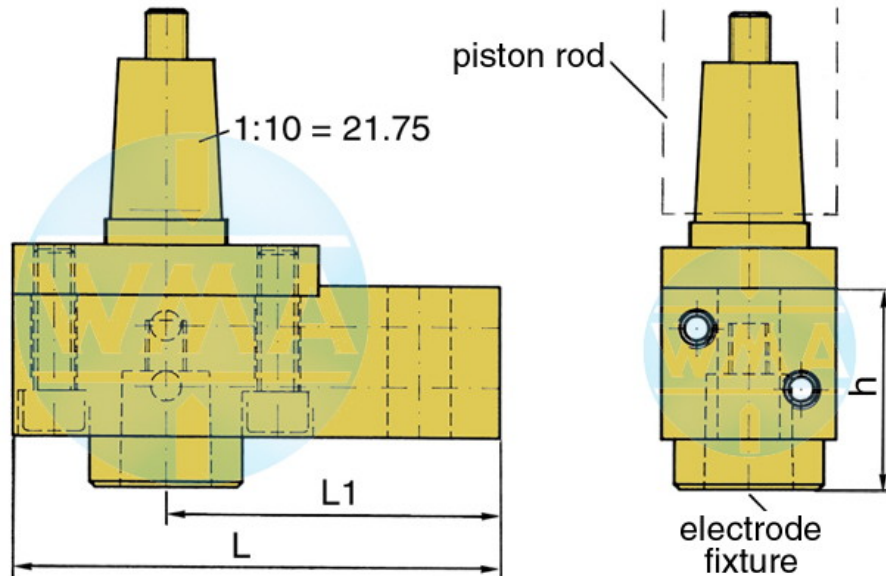


Welding cylinder

Pivot pin, with retract and working stroke

Version: 2011-01

Electrode holder for welding cylinders



Piston Ø	L	L1	Water connection
38	95	65	possible on both sides
44	95	65	possible on both sides
58	110	80	possible on both sides
70	110	80	possible on both sides
80	120	90	possible on both sides
90	120	90	possible on both sides

Available cones for the electrode fixture

cone	Ø d	h
1 : 10	9.8	39
1 : 10	12.0	39
1 : 10	12.7	39
1 : 10	15.5	39
1 : 10	15.75	39
1 : 10	17.75	50
1 : 10	19.0	50
MK 1	12.065	39
MK 2	17.781	50

Further cones available on request!

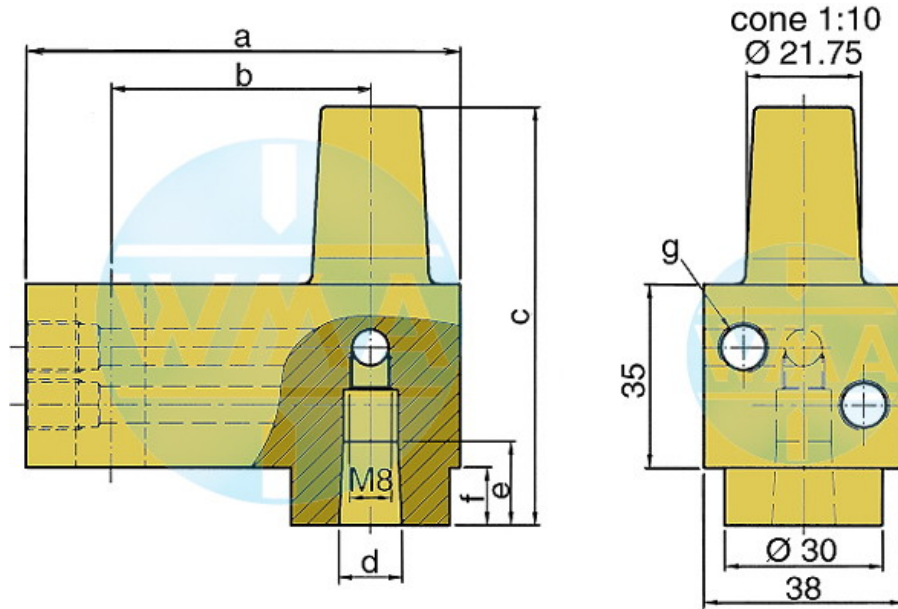


Welding cylinder

Pivot pin, with retract and working stroke

Version: 2011-01

Electrode holder



This electrode holder is main used in welding machines with variable and fast-change electrode shafts.

a	b	c	d	e	f	g	Order-number	
82	49	80	1:10=12.00	16	16	11	M10 x 1 or R 1/8"	L60051080-000
82	49	80	MK1	16	16	11	M10 x 1 or R 1/8"	L60091080-000
82	49	80	1:10=15.75	20	20	11	M10 x 1 or R 1/8"	L60131080-001
82	49	80	1:10=18	20	20	11	M10 x 1 or R 1/8"	L60061080-000
82	49	80	MK2	20	20	11	M10 x 1 or R 1/8"	L60101080-000
82	49	90	1:10=21.75	31	31	21	M10 x 1 or R 1/8"	L60221080-000
82	49	90	MK3	31	31	21	M10 x 1 or R 1/8"	L60111080-000
97	64	90	1:10=21.75	31	31	21	M10 x 1 or R 1/8"	L60221090-000
97	64	90	MK3	31	31	21	M10 x 1 or R 1/8"	L60111090-000
107	74	90	1:10=21.75	31	31	21	M10 x 1 or R 1/8"	L60221090-001
107	74	90	MK3	31	31	21	M10 x 1 or R 1/8"	L60111090-001

We reserve the right to make changes which are in the interest of technical progress.

© by WMA Schmidt & Bittner GmbH, Baumwaide 23, D-74360 Illfeld-Auenstein, Tel. +49 7062 9066-0, Fax +49 7062 9066-20

info@wma-sb.de or wma-sb@t-online.de, <http://www.wma-sb.de>

Cylinder-pivot pin-6