



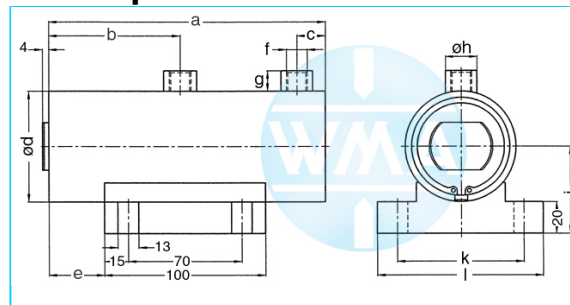
# Welding cylinder

wide lateral flange

Version: 2011-01

unilateral air connection,  
double-stage pressurized

undamped



## Nominal size 038

Stroke	a	b	c	d	e	f	g	h	i	k	l	Force*	Order-number
36	173	82	18	48	35	Rp1/4"	13	20	40	80	105	0.2 kN	105.112.121.038.036.
50	201	96	18	48	35	Rp1/4"	13	20	40	80	105	0.2 kN	105.112.121.038.050.
65	231	111	18	48	35	Rp1/4"	13	20	40	80	105	0.2 kN	105.112.121.038.065.
80	261	126	18	48	35	Rp1/4"	13	20	40	80	105	0.2 kN	105.112.121.038.080.
100	301	146	18	48	35	Rp1/4"	13	20	40	80	105	0.2 kN	105.112.121.038.100.
130	361	176	18	48	35	Rp1/4"	13	20	40	80	105	0.2 kN	105.112.121.038.130.
150	401	196	18	48	35	Rp1/4"	13	20	40	80	105	0.2 kN	105.112.121.038.150.

\* at 1 bar pressure

## Nominal size 044

Stroke	a	b	c	d	e	f	g	h	i	k	l	Force*	Order-number
36	173	82	18	55	35	Rp1/4"	13	20	45	80	105	0.28 kN	105.112.121.044.036.
50	201	96	18	55	35	Rp1/4"	13	20	45	80	105	0.28 kN	105.112.121.044.050.
65	231	111	18	55	35	Rp1/4"	13	20	45	80	105	0.28 kN	105.112.121.044.065.
80	261	126	18	55	35	Rp1/4"	13	20	45	80	105	0.28 kN	105.112.121.044.080.
100	301	146	18	55	35	Rp1/4"	13	20	45	80	105	0.28 kN	105.112.121.044.100.
130	361	176	18	55	35	Rp1/4"	13	20	45	80	105	0.28 kN	105.112.121.044.130.
150	401	196	18	55	35	Rp1/4"	13	20	45	80	105	0.28 kN	105.112.121.044.150.

\* at 1 bar pressure

## Nominal size 058

Stroke	a	b	c	d	e	f	g	h	i	k	l	Force*	Order-number
36	173	82	18	70	35	Rp1/4"	13	20	55	80	105	0.5 kN	105.112.121.058.036.
50	201	96	18	70	35	Rp1/4"	13	20	55	80	105	0.5 kN	105.112.121.058.050.
65	231	111	18	70	35	Rp1/4"	13	20	55	80	105	0.5 kN	105.112.121.058.065.
80	261	126	18	70	35	Rp1/4"	13	20	55	80	105	0.5 kN	105.112.121.058.080.
100	301	146	18	70	35	Rp1/4"	13	20	55	80	105	0.5 kN	105.112.121.058.100.
130	361	176	18	70	35	Rp1/4"	13	20	55	80	105	0.5 kN	105.112.121.058.130.
150	401	196	18	70	35	Rp1/4"	13	20	55	80	105	0.5 kN	105.112.121.058.150.

\* at 1 bar pressure

**Complete the Order-number:**

**Example:** 105.112.121.038.036.??? No. Force connection (S.11).?? No. Cylinder rod (S.12)

We reserve the right to make changes which are in the interest of technical progress.

© by WMA Schmidt & Bittner GmbH, Baumwaide 23, D-74360 Illfeld-Auenstein, Tel. +49 7062 9066-0, Fax +49 7062 9066-20

info@wma-sb.de or wma-sb@t-online.de, http://www.wma-sb.de

Cylinder-lateral flange-1



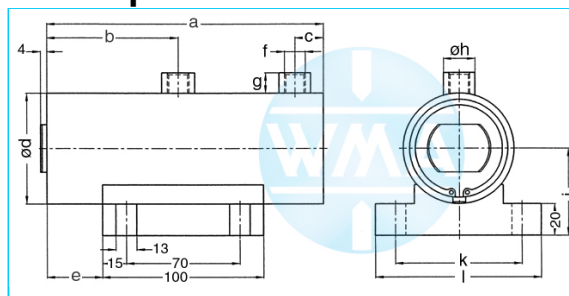
# Welding cylinder

wide lateral flange

Version: 2011-01

unilateral air connection,  
double-stage pressurized

undamped



## Nominal size 070

Stroke	a	b	c	d	e	f	g	h	i	k	l	Force*	Order-number
36	206	99	17	90	60	Rp3/8"	16	25	60	116	140	0.72 kN	105.112.121.070.036.
50	234	113	17	90	60	Rp3/8"	16	25	60	116	140	0.72 kN	105.112.121.070.050.
65	264	128	17	90	60	Rp3/8"	16	25	60	116	140	0.72 kN	105.112.121.070.065.
80	294	143	17	90	60	Rp3/8"	16	25	60	116	140	0.72 kN	105.112.121.070.080.
100	334	163	17	90	60	Rp3/8"	16	25	60	116	140	0.72 kN	105.112.121.070.100.
130	394	193	17	90	60	Rp3/8"	16	25	60	116	140	0.72 kN	105.112.121.070.130.
150	434	213	17	90	60	Rp3/8"	16	25	60	116	140	0.72 kN	105.112.121.070.150.

\* at 1 bar pressure

## Nominal size 080

Stroke	a	b	c	d	e	f	g	h	i	k	l	Force*	Order-number
36	206	99	17	100	60	Rp3/8"	16	25	65	116	140	0.95 kN	105.112.121.080.036.
50	234	113	17	100	60	Rp3/8"	16	25	65	116	140	0.95 kN	105.112.121.080.050.
65	264	128	17	100	60	Rp3/8"	16	25	65	116	140	0.95 kN	105.112.121.080.065.
80	294	143	17	100	60	Rp3/8"	16	25	65	116	140	0.95 kN	105.112.121.080.080.
100	334	163	17	100	60	Rp3/8"	16	25	65	116	140	0.95 kN	105.112.121.080.100.
130	394	193	17	100	60	Rp3/8"	16	25	65	116	140	0.95 kN	105.112.121.080.130.
150	434	213	17	100	60	Rp3/8"	16	25	65	116	140	0.95 kN	105.112.121.080.150.

\* at 1 bar pressure

## Nominal size 090

Stroke	a	b	c	d	e	f	g	h	i	k	l	Force*	Order-number
36	206	99	17	110	60	Rp3/8"	16	25	75	116	140	1.2 kN	105.112.121.090.036.
50	234	113	17	110	60	Rp3/8"	16	25	75	116	140	1.2 kN	105.112.121.090.050.
65	264	128	17	110	60	Rp3/8"	16	25	75	116	140	1.2 kN	105.112.121.090.065.
80	294	143	17	110	60	Rp3/8"	16	25	75	116	140	1.2 kN	105.112.121.090.080.
100	334	163	17	110	60	Rp3/8"	16	25	75	116	140	1.2 kN	105.112.121.090.100.
130	394	193	17	110	60	Rp3/8"	16	25	75	116	140	1.2 kN	105.112.121.090.130.
150	434	213	17	110	60	Rp3/8"	16	25	75	116	140	1.2 kN	105.112.121.090.150.

\* at 1 bar pressure

**Complete the Order-number:**

**Example:** 105.112.121.070.036.??? No. Force connection (S.11).?? No. Cylinder rod (S.12)

We reserve the right to make changes which are in the interest of technical progress.

© by WMA Schmidt & Bittner GmbH, Baumwaide 23, D-74360 Illfeld-Auenstein, Tel. +49 7062 9066-0, Fax +49 7062 9066-20

info@wma-sb.de or wma-sb@t-online.de, <http://www.wma-sb.de>

Cylinder-lateral flange-2



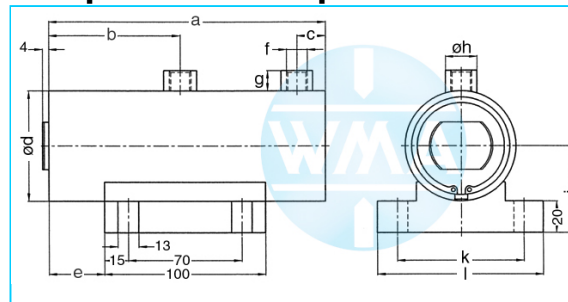
# Welding cylinder

wide lateral flange

Version: 2011-01

unilateral air connection,  
double-stage pressurized

end position damped



## Nominal size 044

Stroke	a	b	c	d	e	f	g	h	i	k	l	Force*	Order-number
36	201	96	18	55	35	Rp1/4"	13	20	45	80	105	0.28 kN	105.112.122.044.036.
50	231	111	18	55	35	Rp1/4"	13	20	45	80	105	0.28 kN	105.112.122.044.050.
65	261	126	18	55	35	Rp1/4"	13	20	45	80	105	0.28 kN	105.112.122.044.065.
80	301	146	18	55	35	Rp1/4"	13	20	45	80	105	0.28 kN	105.112.122.044.080.
100	361	176	18	55	35	Rp1/4"	13	20	45	80	105	0.28 kN	105.112.122.044.100.
130	401	196	18	55	35	Rp1/4"	13	20	45	80	105	0.28 kN	105.112.122.044.130.

\* at 1 bar pressur

## Nominal size 058

Stroke	a	b	c	d	e	f	g	h	i	k	l	Force*	Order-number
36	201	96	18	70	35	Rp1/4"	13	20	55	80	105	0.5 kN	105.112.122.058.036.
50	231	111	18	70	35	Rp1/4"	13	20	55	80	105	0.5 kN	105.112.122.058.050.
65	261	126	18	70	35	Rp1/4"	13	20	55	80	105	0.5 kN	105.112.122.058.065.
80	301	146	18	70	35	Rp1/4"	13	20	55	80	105	0.5 kN	105.112.122.058.080.
100	361	176	18	70	35	Rp1/4"	13	20	55	80	105	0.5 kN	105.112.122.058.100.
130	401	196	18	70	35	Rp1/4"	13	20	55	80	105	0.5 kN	105.112.122.058.130.

\* at 1 bar pressure

## Nominal size 070

Stroke	a	b	c	d	e	f	g	h	i	k	l	Force*	Order-number
36	234	113	17	90	60	Rp3/8"	16	25	60	116	140	0.72 kN	105.112.122.070.036.
50	264	128	17	90	60	Rp3/8"	16	25	60	116	140	0.72 kN	105.112.122.070.050.
65	294	143	17	90	60	Rp3/8"	16	25	60	116	140	0.72 kN	105.112.122.070.065.
80	334	163	17	90	60	Rp3/8"	16	25	60	116	140	0.72 kN	105.112.122.070.080.
100	394	193	17	90	60	Rp3/8"	16	25	60	116	140	0.72 kN	105.112.122.070.100.
130	434	213	17	90	60	Rp3/8"	16	25	60	116	140	0.72 kN	105.112.122.070.130.

\* at 1 bar pressure

**Complete the Order-number:**

**Example:** 105.112.122.058.036.??? No. Force connection (S.11).?? No. Cylinder rod (S.12)

We reserve the right to make changes which are in the interest of technical progress.

© by WMA Schmidt & Bittner GmbH, Baumwaide 23, D-74360 Illfeld-Auenstein, Tel. +49 7062 9066-0, Fax +49 7062 9066-20

info@wma-sb.de or wma-sb@t-online.de, <http://www.wma-sb.de>

Cylinder-lateral flange-3



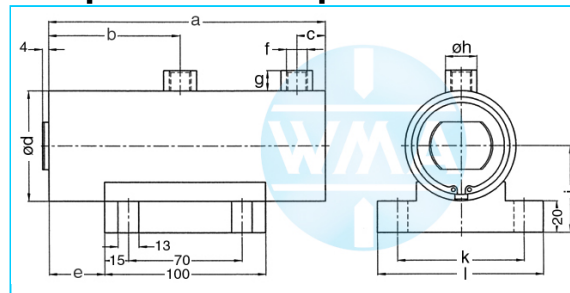
# Welding cylinder

wide lateral flange

Version: 2011-01

unilateral air connection,  
double-stage pressurized

end position damped



## Nominal size 080

Stroke	a	b	c	d	e	f	g	h	i	k	l	Force*	Order-number
36	234	113	17	100	60	Rp3/8"	16	25	65	116	140	0.95 kN	105.112.122.080.036.
50	264	128	17	100	60	Rp3/8"	16	25	65	116	140	0.95 kN	105.112.122.080.050.
65	294	143	17	100	60	Rp3/8"	16	25	65	116	140	0.95 kN	105.112.122.080.065.
80	334	163	17	100	60	Rp3/8"	16	25	65	116	140	0.95 kN	105.112.122.080.080.
100	394	193	17	100	60	Rp3/8"	16	25	65	116	140	0.95 kN	105.112.122.080.100.
130	434	213	17	100	60	Rp3/8"	16	25	65	116	140	0.95 kN	105.112.122.080.130.

\* at 1 bar pressure

## Nominal size 090

Stroke	a	b	c	d	e	f	g	h	i	k	l	Force*	Order-number
36	234	113	17	110	60	Rp3/8"	16	25	75	116	140	1.2 kN	105.112.122.090.036.
50	264	128	17	110	60	Rp3/8"	16	25	75	116	140	1.2 kN	105.112.122.090.050.
65	294	143	17	110	60	Rp3/8"	16	25	75	116	140	1.2 kN	105.112.122.090.065.
80	334	163	17	110	60	Rp3/8"	16	25	75	116	140	1.2 kN	105.112.122.090.080.
100	394	193	17	110	60	Rp3/8"	16	25	75	116	140	1.2 kN	105.112.122.090.100.
130	434	213	17	110	60	Rp3/8"	16	25	75	116	140	1.2 kN	105.112.122.090.130.

\* at 1 bar pressure

**Complete the Order-number:**

**Example:** 105.112.122.080.036.??? No. Force connection (S.11).?? No. Cylinder rod (S.12)

We reserve the right to make changes which are in the interest of technical progress.

© by WMA Schmidt & Bittner GmbH, Baumwaide 23, D-74360 Illfeld-Auenstein, Tel. +49 7062 9066-0, Fax +49 7062 9066-20

info@wma-sb.de or wma-sb@t-online.de, <http://www.wma-sb.de>

Cylinder-lateral flange-4



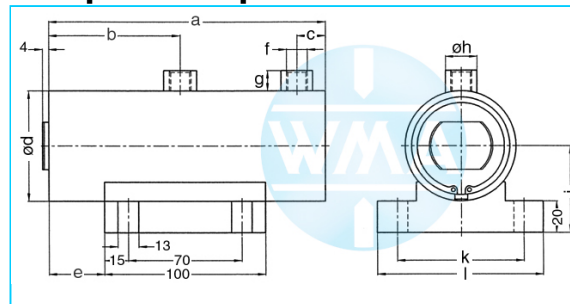
# Welding cylinder

wide lateral flange

Version: 2011-01

unilateral air connection,  
double-stage pressurized

damped independent of stroke



## Nominal size 044

Stroke	a	b	c	d	e	f	g	h	i	k	l	Force*	Order-number
36	173	82	18	55	35	Rp1/4"	13	20	45	80	105	0.28 kN	105.112.123.044.036.
50	201	96	18	55	35	Rp1/4"	13	20	45	80	105	0.28 kN	105.112.123.044.050.
65	231	111	18	55	35	Rp1/4"	13	20	45	80	105	0.28 kN	105.112.123.044.065.
80	261	126	18	55	35	Rp1/4"	13	20	45	80	105	0.28 kN	105.112.123.044.080.
100	301	146	18	55	35	Rp1/4"	13	20	45	80	105	0.28 kN	105.112.123.044.100.
130	361	176	18	55	35	Rp1/4"	13	20	45	80	105	0.28 kN	105.112.123.044.130.
150	401	196	18	55	35	Rp1/4"	13	20	45	80	105	0.28 kN	105.112.123.044.150.

\* at 1 bar pressure

## Nominal size 058

Stroke	a	b	c	d	e	f	g	h	i	k	l	Force*	Order-number
36	173	82	18	70	35	Rp1/4"	13	20	55	80	105	0.5 kN	105.112.123.058.036.
50	201	96	18	70	35	Rp1/4"	13	20	55	80	105	0.5 kN	105.112.123.058.050.
65	231	111	18	70	35	Rp1/4"	13	20	55	80	105	0.5 kN	105.112.123.058.065.
80	261	126	18	70	35	Rp1/4"	13	20	55	80	105	0.5 kN	105.112.123.058.080.
100	301	146	18	70	35	Rp1/4"	13	20	55	80	105	0.5 kN	105.112.123.058.100.
130	361	176	18	70	35	Rp1/4"	13	20	55	80	105	0.5 kN	105.112.123.058.130.
150	401	196	18	70	35	Rp1/4"	13	20	55	80	105	0.5 kN	105.112.123.058.150.

\* at 1 bar pressure

## Nominal size 070

Stroke	a	b	c	d	e	f	g	h	i	k	l	Force*	Order-number
36	206	99	17	90	60	Rp3/8"	16	25	60	116	140	0.72 kN	105.112.123.070.036.
50	234	113	17	90	60	Rp3/8"	16	25	60	116	140	0.72 kN	105.112.123.070.050.
65	264	128	17	90	60	Rp3/8"	16	25	60	116	140	0.72 kN	105.112.123.070.065.
80	294	143	17	90	60	Rp3/8"	16	25	60	116	140	0.72 kN	105.112.123.070.080.
100	334	163	17	90	60	Rp3/8"	16	25	60	116	140	0.72 kN	105.112.123.070.100.
130	394	193	17	90	60	Rp3/8"	16	25	60	116	140	0.72 kN	105.112.123.070.130.
150	434	213	17	90	60	Rp3/8"	16	25	60	116	140	0.72 kN	105.112.123.070.150.

\* at 1 bar pressure

**Complete the Order-number:**

**Example:** 105.112.123.070.036.??? No. Force connection (S. 11).?? No. Cylinder rod (S. 12)

We reserve the right to make changes which are in the interest of technical progress.

© by WMA Schmidt & Bittner GmbH, Baumwaide 23, D-74360 Illfeld-Auenstein, Tel. +49 7062 9066-0, Fax +49 7062 9066-20

info@wma-sb.de or wma-sb@t-online.de, <http://www.wma-sb.de>

Cylinder-lateral flange-5



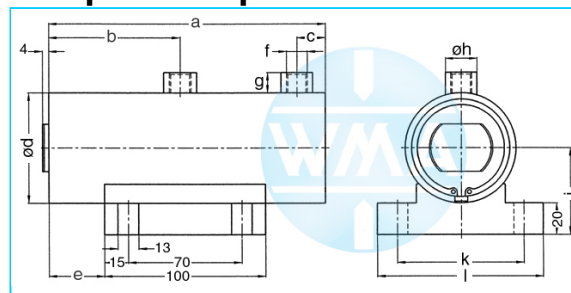
# Welding cylinder

wide lateral flange

Version: 2011-01

unilateral air connection,  
double-stage pressurized

damped independent of stroke



## Nominal size 080

Stroke	a	b	c	d	e	f	g	h	i	k	l	Force*	Order-number
36	206	99	17	100	60	Rp3/8"	16	25	65	116	140	0.95 kN	105.112.123.080.036.
50	234	113	17	100	60	Rp3/8"	16	25	65	116	140	0.95 kN	105.112.123.080.050.
65	264	128	17	100	60	Rp3/8"	16	25	65	116	140	0.95 kN	105.112.123.080.065.
80	294	143	17	100	60	Rp3/8"	16	25	65	116	140	0.95 kN	105.112.123.080.080.
100	334	163	17	100	60	Rp3/8"	16	25	65	116	140	0.95 kN	105.112.123.080.100.
130	394	193	17	100	60	Rp3/8"	16	25	65	116	140	0.95 kN	105.112.123.080.130.
150	434	213	17	100	60	Rp3/8"	16	25	65	116	140	0.95 kN	105.112.123.080.150.

\* at 1 bar pressure

## Nominal size 090

Stroke	a	b	c	d	e	f	g	h	i	k	l	Force*	Order-number
36	206	99	17	110	60	Rp3/8"	16	25	75	116	140	1.2 kN	105.112.123.090.036.
50	234	113	17	110	60	Rp3/8"	16	25	75	116	140	1.2 kN	105.112.123.090.050.
65	264	128	17	110	60	Rp3/8"	16	25	75	116	140	1.2 kN	105.112.123.090.065.
80	294	143	17	110	60	Rp3/8"	16	25	75	116	140	1.2 kN	105.112.123.090.080.
100	334	163	17	110	60	Rp3/8"	16	25	75	116	140	1.2 kN	105.112.123.090.100.
130	394	193	17	110	60	Rp3/8"	16	25	75	116	140	1.2 kN	105.112.123.090.130.
150	434	213	17	110	60	Rp3/8"	16	25	75	116	140	1.2 kN	105.112.123.090.150.

\* at 1 bar pressure

**Complete the Order-number:**

**Example: 105.112.123.080.065.???** No. Force connection (S.11).?? No. Cylinder rod (S.12)

We reserve the right to make changes which are in the interest of technical progress.

© by WMA Schmidt & Bittner GmbH, Baumwaide 23, D-74360 Illfeld-Auenstein, Tel. +49 7062 9066-0, Fax +49 7062 9066-20

info@wma-sb.de or wma-sb@t-online.de, <http://www.wma-sb.de>

Cylinder-lateral flange-6





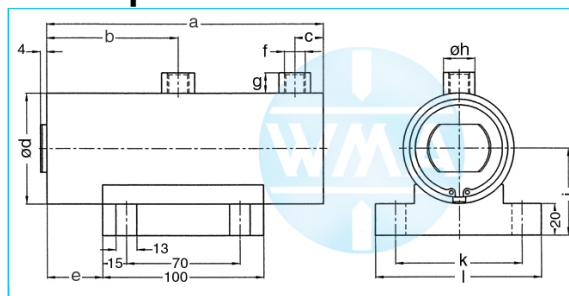
# Welding cylinder

wide lateral flange

Version: 2011-01

unilateral air connection,  
three-stage pressurized

undamped



## Nominal size 070

Stroke	a	b	c	d	e	f	g	h	i	k	l	Force*	Order-number
36	276	169	17	90	60	Rp3/8"	16	25	60	116	140	1.04 kN	105.112.131.070.036.
50	318	197	17	90	60	Rp3/8"	16	25	60	116	140	1.04 kN	105.112.131.070.050.
65	363	227	17	90	60	Rp3/8"	16	25	60	116	140	1.04 kN	105.112.131.070.065.
80	408	257	17	90	60	Rp3/8"	16	25	60	116	140	1.04 kN	105.112.131.070.080.
100	468	297	17	90	60	Rp3/8"	16	25	60	116	140	1.04 kN	105.112.131.070.100.
130	558	357	17	90	60	Rp3/8"	16	25	60	116	140	1.04 kN	105.112.131.070.130.
150	618	397	17	90	60	Rp3/8"	16	25	60	116	140	1.04 kN	105.112.131.070.150.

\* at 1 bar pressure

## Nominal size 080

Stroke	a	b	c	d	e	f	g	h	i	k	l	Force*	Order-number
36	276	169	17	100	60	Rp3/8"	16	25	65	116	140	1.4 kN	105.112.131.080.036.
50	318	197	17	100	60	Rp3/8"	16	25	65	116	140	1.4 kN	105.112.131.080.050.
65	363	227	17	100	60	Rp3/8"	16	25	65	116	140	1.4 kN	105.112.131.080.065.
80	408	257	17	100	60	Rp3/8"	16	25	65	116	140	1.4 kN	105.112.131.080.080.
100	468	297	17	100	60	Rp3/8"	16	25	65	116	140	1.4 kN	105.112.131.080.100.
130	558	357	17	100	60	Rp3/8"	16	25	65	116	140	1.4 kN	105.112.131.080.130.
150	618	397	17	100	60	Rp3/8"	16	25	65	116	140	1.4 kN	105.112.131.080.150.

\* at 1 bar pressure

## Nominal size 090

Stroke	a	b	c	d	e	f	g	h	i	k	l	Force*	Order-number
36	276	169	17	110	60	Rp3/8"	16	25	75	116	140	1.8 kN	105.112.131.090.036.
50	318	197	17	110	60	Rp3/8"	16	25	75	116	140	1.8 kN	105.112.131.090.050.
65	363	227	17	110	60	Rp3/8"	16	25	75	116	140	1.8 kN	105.112.131.090.065.
80	408	257	17	110	60	Rp3/8"	16	25	75	116	140	1.8 kN	105.112.131.090.080.
100	468	297	17	110	60	Rp3/8"	16	25	75	116	140	1.8 kN	105.112.131.090.100.
130	558	357	17	110	60	Rp3/8"	16	25	75	116	140	1.8 kN	105.112.131.090.130.
150	618	397	17	110	60	Rp3/8"	16	25	75	116	140	1.8 kN	105.112.131.090.150.

\* at 1 bar pressure

**Complete the Order-number:**

**Example:** 105.112.131.070.036.??? No. Force connection (S.11).?? No. Cylinder rod (S.12)

We reserve the right to make changes which are in the interest of technical progress.

© by WMA Schmidt & Bittner GmbH, Baumwaide 23, D-74360 Illfeld-Auenstein, Tel. +49 7062 9066-0, Fax +49 7062 9066-20

info@wma-sb.de or wma-sb@t-online.de, <http://www.wma-sb.de>

Cylinder-lateral flange-8



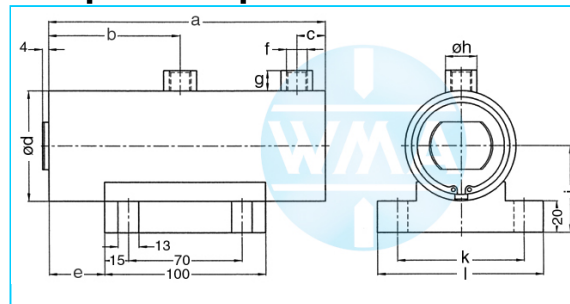
# Welding cylinder

wide lateral flange

Version: 2011-01

unilateral air connection,  
three-stage pressurized

damped independent of stroke



## Nominal size 044

Stroke	a	b	c	d	e	f	g	h	i	k	l	Force*	Order-number
36	232	141	18	55	35	Rp1/4"	13	20	45	80	105	0.39 kN	105.112.132.044.036.
50	274	169	18	55	35	Rp1/4"	13	20	45	80	105	0.39 kN	105.112.132.044.050.
65	319	199	18	55	35	Rp1/4"	13	20	45	80	105	0.39 kN	105.112.132.044.065.
80	364	229	18	55	35	Rp1/4"	13	20	45	80	105	0.39 kN	105.112.132.044.080.
100	424	269	18	55	35	Rp1/4"	13	20	45	80	105	0.39 kN	105.112.132.044.100.
130	514	329	18	55	35	Rp1/4"	13	20	45	80	105	0.39 kN	105.112.132.044.130.
150	574	369	18	55	35	Rp1/4"	13	20	45	80	105	0.39 kN	105.112.132.044.150.

\* at 1 bar pressure

## Nominal size 058

Stroke	a	b	c	d	e	f	g	h	i	k	l	Force*	Order-number
36	232	141	18	70	35	Rp1/4"	13	20	55	80	105	0.72 kN	105.112.132.058.036.
50	274	169	18	70	35	Rp1/4"	13	20	55	80	105	0.72 kN	105.112.132.058.050.
65	319	199	18	70	35	Rp1/4"	13	20	55	80	105	0.72 kN	105.112.132.058.065.
80	364	229	18	70	35	Rp1/4"	13	20	55	80	105	0.72 kN	105.112.132.058.080.
100	424	269	18	70	35	Rp1/4"	13	20	55	80	105	0.72 kN	105.112.132.058.100.
130	514	329	18	70	35	Rp1/4"	13	20	55	80	105	0.72 kN	105.112.132.058.130.
150	574	369	18	70	35	Rp1/4"	13	20	55	80	105	0.72 kN	105.112.132.058.150.

\* at 1 bar pressure

## Nominal size 070

Stroke	a	b	c	d	e	f	g	h	i	k	l	Force*	Order-number
36	276	169	17	90	60	Rp3/8"	16	25	60	116	140	1.04 kN	105.112.132.070.036.
50	318	197	17	90	60	Rp3/8"	16	25	60	116	140	1.04 kN	105.112.132.070.050.
65	363	227	17	90	60	Rp3/8"	16	25	60	116	140	1.04 kN	105.112.132.070.065.
80	408	257	17	90	60	Rp3/8"	16	25	60	116	140	1.04 kN	105.112.132.070.080.
100	468	297	17	90	60	Rp3/8"	16	25	60	116	140	1.04 kN	105.112.132.070.100.
130	558	357	17	90	60	Rp3/8"	16	25	60	116	140	1.04 kN	105.112.132.070.130.
150	618	397	17	90	60	Rp3/8"	16	25	60	116	140	1.04 kN	105.112.132.070.150.

\* at 1 bar pressure

**Complete the Order-number:**

**Example:** 105.112.132.070.036.??? No. Force connection (S. 11).?? No. Cylinder rod (S. 12)

We reserve the right to make changes which are in the interest of technical progress.

© by WMA Schmidt & Bittner GmbH, Baumwaide 23, D-74360 Illfeld-Auenstein, Tel. +49 7062 9066-0, Fax +49 7062 9066-20

info@wma-sb.de or wma-sb@t-online.de, <http://www.wma-sb.de>

Cylinder-lateral flange-9



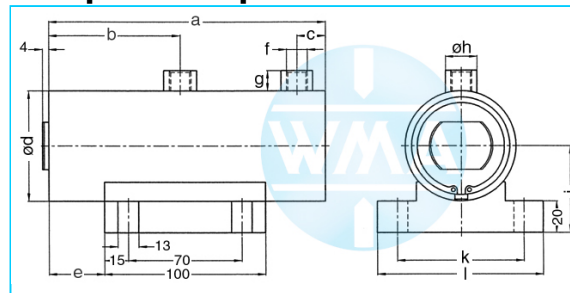
# Welding cylinder

wide lateral flange

Version: 2011-01

unilateral air connection,  
three-stage pressurized

damped independent of stroke



## Nominal size 080

Stroke	a	b	c	d	e	f	g	h	i	k	l	Force*	Order-number
36	276	169	17	100	60	Rp3/8"	16	25	65	116	140	1.4 kN	105.112.132.080.036.
50	318	197	17	100	60	Rp3/8"	16	25	65	116	140	1.4 kN	105.112.132.080.050.
65	363	227	17	100	60	Rp3/8"	16	25	65	116	140	1.4 kN	105.112.132.080.065.
80	408	257	17	100	60	Rp3/8"	16	25	65	116	140	1.4 kN	105.112.132.080.080.
100	468	297	17	100	60	Rp3/8"	16	25	65	116	140	1.4 kN	105.112.132.080.100.
130	558	357	17	100	60	Rp3/8"	16	25	65	116	140	1.4 kN	105.112.132.080.130.
150	618	397	17	100	60	Rp3/8"	16	25	65	116	140	1.4 kN	105.112.132.080.150.

\* at 1 bar pressure

## Nominal size 090

Stroke	a	b	c	d	e	f	g	h	i	k	l	Force*	Order-number
36	276	169	17	110	60	Rp3/8"	16	25	75	116	140	1.8 kN	105.112.132.090.036.
50	318	197	17	110	60	Rp3/8"	16	25	75	116	140	1.8 kN	105.112.132.090.050.
65	363	227	17	110	60	Rp3/8"	16	25	75	116	140	1.8 kN	105.112.132.090.065.
80	408	257	17	110	60	Rp3/8"	16	25	75	116	140	1.8 kN	105.112.132.090.080.
100	468	297	17	110	60	Rp3/8"	16	25	75	116	140	1.8 kN	105.112.132.090.100.
130	558	357	17	110	60	Rp3/8"	16	25	75	116	140	1.8 kN	105.112.132.090.130.
150	618	397	17	110	60	Rp3/8"	16	25	75	116	140	1.8 kN	105.112.132.090.150.

\* at 1 bar pressure

**Complete the Order-number:**

**Example: 105.112.132.090.036.???** No. Force connection (S.11).?? No. Cylinder rod (S.12)

We reserve the right to make changes which are in the interest of technical progress.

© by WMA Schmidt & Bittner GmbH, Baumwaide 23, D-74360 Illfeld-Auenstein, Tel. +49 7062 9066-0, Fax +49 7062 9066-20

info@wma-sb.de or wma-sb@t-online.de, <http://www.wma-sb.de>

Cylinder-lateral flange-10



# Welding cylinder

wide lateral flange

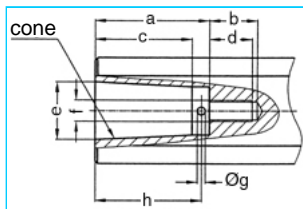
Version: 2011-01

## Force connection

Write the number (with point) from the selected Force connection direct behind the Order-number of the cylinder and complete the whole Order-number with the chosen number of the Cylinder rod.

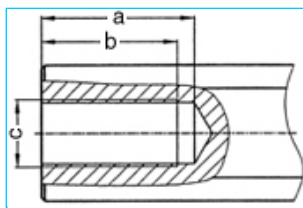
**Example:** 105.112.132.090.036.303.?? No. Cylinder rod (S.12)

### Internal cone



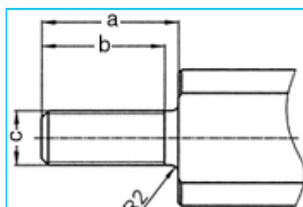
a	b	c	d	e	cone	f	g	h	No.
33	18	27.0	16	17.780	MK2	M8	3	30	101.
42	18	35.5	16	21.806	MK3	M8	3	39	102.
42	18	35.5	16	21.750	1:10	M8	3	39	103.

### Female thread



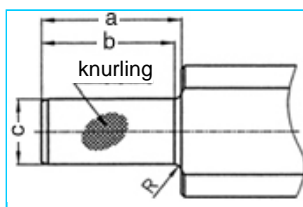
a	b	c	No.
45	40	M20 x 1.5	201.
62	58	M20 x 1.5	202.

### Male thread



a	b	c	No.
40	36	M16 x 1.5	301.
40	36	M20 x 1.5	302.
40	36	M24 x 1.5	303.

### Knurl



a	b	c	Knurling	R	No.
42	40	20 <sup>17</sup>	1 x 0.2 DIN 82	2	401.
42	42	25 <sup>17</sup>	1 x 0.2 DIN 82	-	402.

We reserve the right to make changes which are in the interest of technical progress.

© by WMA Schmidt & Bittner GmbH, Baumwaide 23, D-74360 Illfeld-Auenstein, Tel. +49 7062 9066-0, Fax +49 7062 9066-20

info@wma-sb.de or wma-sb@t-online.de, <http://www.wma-sb.de>

Cylinder-lateral flange-11



# Welding cylinder

wide lateral flange

Version: 2011-01

## Cylinder rod

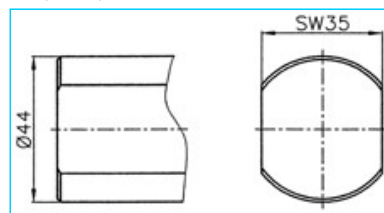
flattened and rotation locked

Complete the Order-number with the selected number of the chosen cylinder rod.

**Example: 105.112.132.090.036.303.00**

### For piston diameter

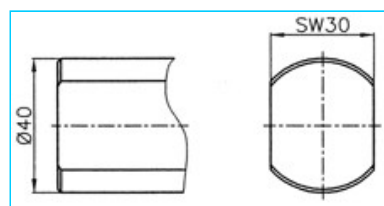
70, 80, 90



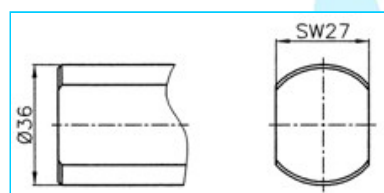
**No. 00**

### For piston diameter

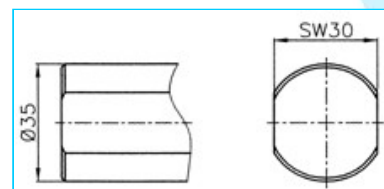
38, 44, 58



**No. 01**



**No. 02**



**No. 03**

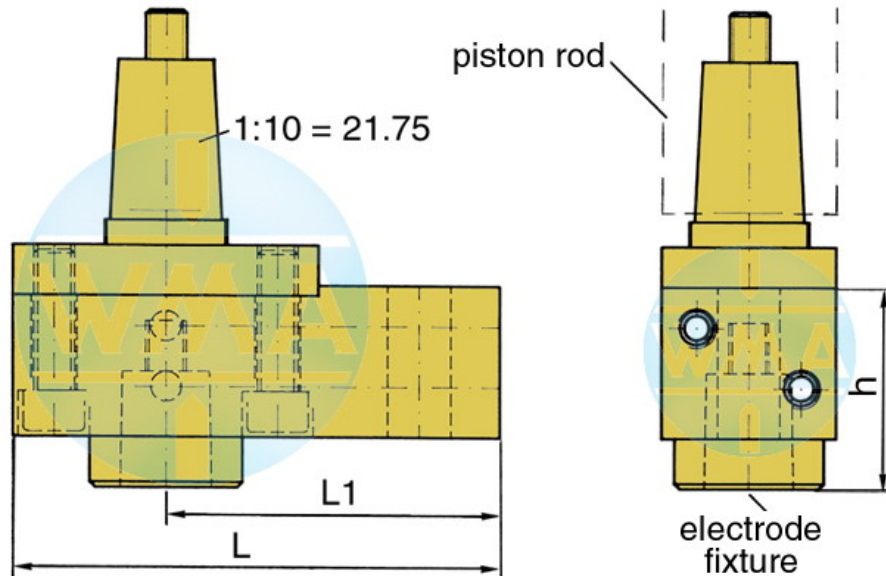


# Welding cylinder

wide lateral flange

Version: 2011-01

## Electrode holder for welding cylinders



Piston Ø	L	L1	Water connection
38	95	65	possible on both sides
44	95	65	possible on both sides
58	110	80	possible on both sides
70	110	80	possible on both sides
80	120	90	possible on both sides
90	120	90	possible on both sides

## Available cones for the electrode fixture

cone	Ø d	h
1 : 10	9.8	39
1 : 10	12.0	39
1 : 10	12.7	39
1 : 10	15.5	39
1 : 10	15.75	39
1 : 10	17.75	50
1 : 10	19.0	50
MK 1	12.065	39
MK 2	17.781	50

Further cones available on request!

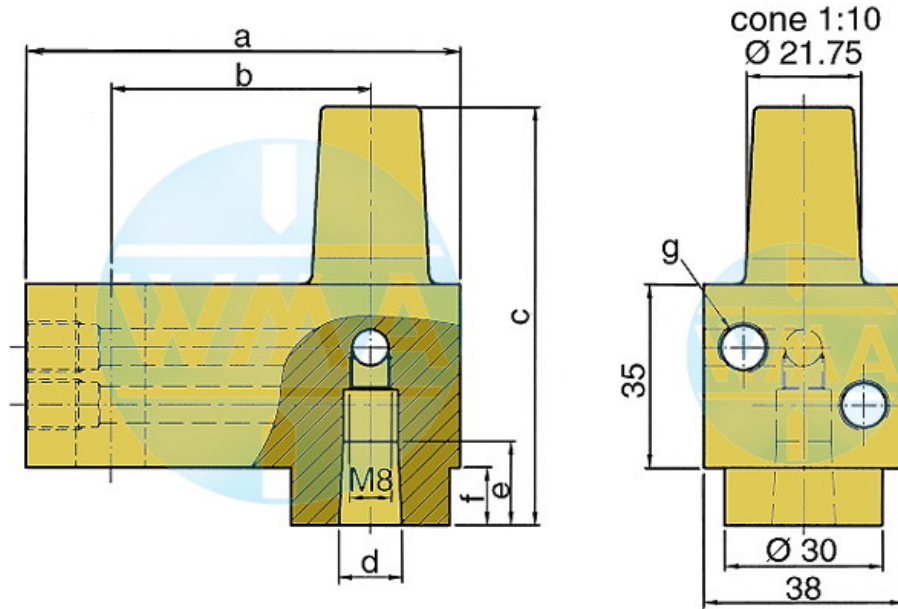


# Welding cylinder

wide lateral flange

Version: 2011-01

## Electrode holder



This electrode holder is main used in welding machines with variable and fast-change electrode shafts.

a	b	c	d	e	f	g	Order-number	
82	49	80	1:10=12.00	16	16	11	M10 x 1 or R 1/8"	L60051080-000
82	49	80	MK1	16	16	11	M10 x 1 or R 1/8"	L60091080-000
82	49	80	1:10=15.75	20	20	11	M10 x 1 or R 1/8"	L60131080-001
82	49	80	1:10=18	20	20	11	M10 x 1 or R 1/8"	L60061080-000
82	49	80	MK2	20	20	11	M10 x 1 or R 1/8"	L60101080-000
82	49	90	1:10=21.75	31	31	21	M10 x 1 or R 1/8"	L60221080-000
82	49	90	MK3	31	31	21	M10 x 1 or R 1/8"	L60111080-000
97	64	90	1:10=21.75	31	31	21	M10 x 1 or R 1/8"	L60221090-000
97	64	90	MK3	31	31	21	M10 x 1 or R 1/8"	L60111090-000
107	74	90	1:10=21.75	31	31	21	M10 x 1 or R 1/8"	L60221090-001
107	74	90	MK3	31	31	21	M10 x 1 or R 1/8"	L60111090-001

We reserve the right to make changes which are in the interest of technical progress.

© by WMA Schmidt & Bittner GmbH, Baumwaide 23, D-74360 Illfeld-Auenstein, Tel. +49 7062 9066-0, Fax +49 7062 9066-20

info@wma-sb.de or wma-sb@t-online.de, <http://www.wma-sb.de>