



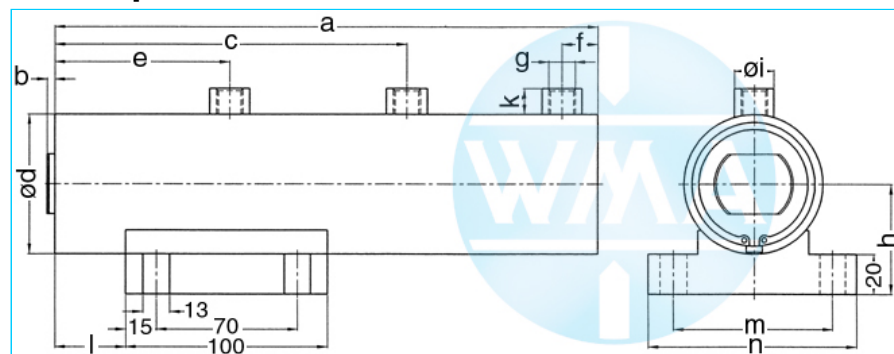
Welding cylinder

wide lateral flange, retract and working stroke

Version: 2011-01

unilateral air connection,
double-stage pressurized

undamped



Nominal size 038

| S | WS | a | b | c | d | e | f | g | h | i | k | l | m | n | Force* | Order-number |
|-----|----|-----|---|-----|----|-----|----|--------|----|----|----|----|----|-----|--------|----------------------|
| 50 | 30 | 369 | 4 | 254 | 48 | 126 | 18 | Rp1/4" | 40 | 20 | 13 | 35 | 80 | 105 | 0.2 kN | 105.113.124.038.050. |
| 60 | 20 | 379 | 4 | 254 | 48 | 126 | 18 | Rp1/4" | 40 | 20 | 13 | 35 | 80 | 105 | 0.2 kN | 105.113.124.038.060. |
| 70 | 30 | 429 | 4 | 294 | 48 | 146 | 18 | Rp1/4" | 40 | 20 | 13 | 35 | 80 | 105 | 0.2 kN | 105.113.124.038.070. |
| 80 | 20 | 439 | 4 | 294 | 48 | 146 | 18 | Rp1/4" | 40 | 20 | 13 | 35 | 80 | 105 | 0.2 kN | 105.113.124.038.080. |
| 90 | 40 | 509 | 4 | 354 | 48 | 176 | 18 | Rp1/4" | 40 | 20 | 13 | 35 | 80 | 105 | 0.2 kN | 105.113.124.038.090. |
| 100 | 30 | 519 | 4 | 354 | 48 | 176 | 18 | Rp1/4" | 40 | 20 | 13 | 35 | 80 | 105 | 0.2 kN | 105.113.124.038.100. |
| 110 | 40 | 569 | 4 | 394 | 48 | 196 | 18 | Rp1/4" | 40 | 20 | 13 | 35 | 80 | 105 | 0.2 kN | 105.113.124.038.110. |

S = retract, WS = working stroke, *at 1 bar pressure

Nominal size 044

| S | WS | a | b | c | d | e | f | g | h | i | k | l | m | n | Force* | Order-number |
|-----|----|-----|---|-----|----|-----|----|--------|----|----|----|----|----|-----|---------|----------------------|
| 50 | 30 | 369 | 4 | 254 | 55 | 126 | 18 | Rp1/4" | 45 | 20 | 13 | 35 | 80 | 105 | 0.28 kN | 105.113.124.044.050. |
| 60 | 20 | 379 | 4 | 254 | 55 | 126 | 18 | Rp1/4" | 45 | 20 | 13 | 35 | 80 | 105 | 0.28 kN | 105.113.124.044.060. |
| 70 | 30 | 429 | 4 | 294 | 55 | 146 | 18 | Rp1/4" | 45 | 20 | 13 | 35 | 80 | 105 | 0.28 kN | 105.113.124.044.070. |
| 80 | 20 | 439 | 4 | 294 | 55 | 146 | 18 | Rp1/4" | 45 | 20 | 13 | 35 | 80 | 105 | 0.28 kN | 105.113.124.044.080. |
| 90 | 40 | 509 | 4 | 354 | 55 | 176 | 18 | Rp1/4" | 45 | 20 | 13 | 35 | 80 | 105 | 0.28 kN | 105.113.124.044.090. |
| 100 | 30 | 519 | 4 | 354 | 55 | 176 | 18 | Rp1/4" | 45 | 20 | 13 | 35 | 80 | 105 | 0.28 kN | 105.113.124.044.100. |
| 110 | 40 | 569 | 4 | 394 | 55 | 196 | 18 | Rp1/4" | 45 | 20 | 13 | 35 | 80 | 105 | 0.28 kN | 105.113.124.044.110. |

S = retract, WS = working stroke, *at 1 bar pressure

Nominal size 058

| S | WS | a | b | c | d | e | f | g | h | i | k | l | m | n | Force* | Order-number |
|-----|----|-----|---|-----|----|-----|----|--------|----|----|----|----|----|-----|--------|----------------------|
| 50 | 30 | 369 | 4 | 254 | 70 | 126 | 18 | Rp1/4" | 55 | 20 | 13 | 35 | 80 | 105 | 0.5 kN | 105.113.124.058.050. |
| 60 | 20 | 379 | 4 | 254 | 70 | 126 | 18 | Rp1/4" | 55 | 20 | 13 | 35 | 80 | 105 | 0.5 kN | 105.113.124.058.060. |
| 70 | 30 | 429 | 4 | 294 | 70 | 146 | 18 | Rp1/4" | 55 | 20 | 13 | 35 | 80 | 105 | 0.5 kN | 105.113.124.058.070. |
| 80 | 20 | 439 | 4 | 294 | 70 | 146 | 18 | Rp1/4" | 55 | 20 | 13 | 35 | 80 | 105 | 0.5 kN | 105.113.124.058.080. |
| 90 | 40 | 509 | 4 | 354 | 70 | 176 | 18 | Rp1/4" | 55 | 20 | 13 | 35 | 80 | 105 | 0.5 kN | 105.113.124.058.090. |
| 100 | 30 | 519 | 4 | 354 | 70 | 176 | 18 | Rp1/4" | 55 | 20 | 13 | 35 | 80 | 105 | 0.5 kN | 105.113.124.058.100. |
| 110 | 40 | 569 | 4 | 394 | 70 | 196 | 18 | Rp1/4" | 55 | 20 | 13 | 35 | 80 | 105 | 0.5 kN | 105.113.124.058.110. |

S = retract, WS = working stroke, *at 1 bar pressure

Complete the Order-number:

Example: **105.113.124.044.060.???** No. Force connection (S.5).?? No. Cylinder rod (S.6)

We reserve the right to make changes which are in the interest of technical progress.

© by WMA Schmidt & Bittner GmbH, Baumwaide 23, D-74360 Illfeld-Auenstein, Tel. +49 7062 9066-0, Fax +49 7062 9066-20

info@wma-sb.de or wma-sb@t-online.de, http://www.wma-sb.de

Cylinder-lateral flange-1



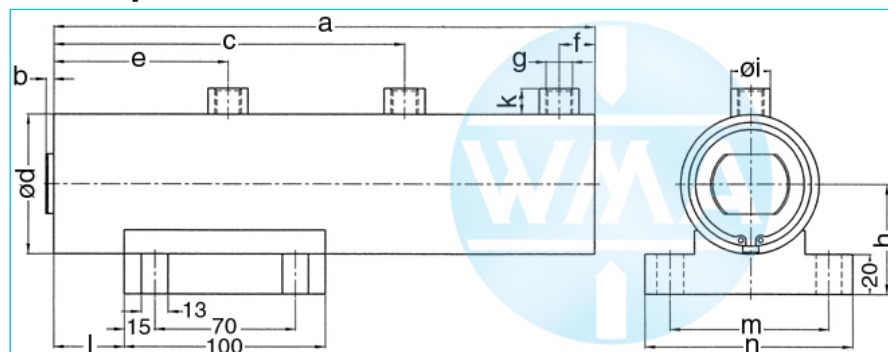
Welding cylinder

wide lateral flange, retract and working stroke

Version: 2011-01

unilateral air connection,
double-stage pressurized

undamped



Nominal size 070

| S | WS | a | b | c | d | e | f | g | h | i | k | l | m | n | Force* | Order-number |
|-----|----|-----|---|-----|----|-----|----|--------|----|----|----|----|-----|-----|---------|----------------------|
| 50 | 30 | 419 | 4 | 293 | 90 | 143 | 17 | Rp3/8" | 60 | 25 | 16 | 60 | 116 | 140 | 0.72 kN | 105.113.124.070.050. |
| 60 | 20 | 429 | 4 | 293 | 90 | 143 | 17 | Rp3/8" | 60 | 25 | 16 | 60 | 116 | 140 | 0.72 kN | 105.113.124.070.060. |
| 70 | 30 | 479 | 4 | 333 | 90 | 163 | 17 | Rp3/8" | 60 | 25 | 16 | 60 | 116 | 140 | 0.72 kN | 105.113.124.070.070. |
| 80 | 20 | 489 | 4 | 333 | 90 | 163 | 17 | Rp3/8" | 60 | 25 | 16 | 60 | 116 | 140 | 0.72 kN | 105.113.124.070.080. |
| 90 | 40 | 559 | 4 | 393 | 90 | 193 | 17 | Rp3/8" | 60 | 25 | 16 | 60 | 116 | 140 | 0.72 kN | 105.113.124.070.090. |
| 100 | 30 | 569 | 4 | 393 | 90 | 193 | 17 | Rp3/8" | 60 | 25 | 16 | 60 | 116 | 140 | 0.72 kN | 105.113.124.070.100. |
| 110 | 40 | 619 | 4 | 433 | 90 | 213 | 17 | Rp3/8" | 60 | 25 | 16 | 60 | 116 | 140 | 0.72 kN | 105.113.124.070.110. |

S = retract, WS = working stroke, *at 1 bar pressure

Nominal size 080

| S | WS | a | b | c | d | e | f | g | h | i | k | l | m | n | Force* | Order-number |
|-----|----|-----|---|-----|-----|-----|----|--------|----|----|----|----|-----|-----|---------|----------------------|
| 50 | 30 | 419 | 4 | 293 | 100 | 143 | 17 | Rp3/8" | 65 | 25 | 16 | 60 | 116 | 140 | 0.95 kN | 105.113.124.080.050. |
| 60 | 20 | 429 | 4 | 293 | 100 | 143 | 17 | Rp3/8" | 65 | 25 | 16 | 60 | 116 | 140 | 0.95 kN | 105.113.124.080.060. |
| 70 | 30 | 479 | 4 | 333 | 100 | 163 | 17 | Rp3/8" | 65 | 25 | 16 | 60 | 116 | 140 | 0.95 kN | 105.113.124.080.070. |
| 80 | 20 | 489 | 4 | 333 | 100 | 163 | 17 | Rp3/8" | 65 | 25 | 16 | 60 | 116 | 140 | 0.95 kN | 105.113.124.080.080. |
| 90 | 40 | 559 | 4 | 393 | 100 | 193 | 17 | Rp3/8" | 65 | 25 | 16 | 60 | 116 | 140 | 0.95 kN | 105.113.124.080.090. |
| 100 | 30 | 569 | 4 | 393 | 100 | 193 | 17 | Rp3/8" | 65 | 25 | 16 | 60 | 116 | 140 | 0.95 kN | 105.113.124.080.100. |
| 110 | 40 | 619 | 4 | 433 | 100 | 213 | 17 | Rp3/8" | 65 | 25 | 16 | 60 | 116 | 140 | 0.95 kN | 105.113.124.080.110. |

S = retract, WS = working stroke, *at 1 bar pressure

Nominal size 090

| S | WS | a | b | c | d | e | f | g | h | i | k | l | m | n | Force* | Order-number |
|-----|----|-----|---|-----|-----|-----|----|--------|----|----|----|----|-----|-----|--------|----------------------|
| 50 | 30 | 419 | 4 | 293 | 110 | 143 | 17 | Rp3/8" | 75 | 25 | 16 | 60 | 116 | 140 | 1.2 kN | 105.113.124.090.050. |
| 60 | 20 | 429 | 4 | 293 | 110 | 143 | 17 | Rp3/8" | 75 | 25 | 16 | 60 | 116 | 140 | 1.2 kN | 105.113.124.090.060. |
| 70 | 30 | 479 | 4 | 333 | 110 | 163 | 17 | Rp3/8" | 75 | 25 | 16 | 60 | 116 | 140 | 1.2 kN | 105.113.124.090.070. |
| 80 | 20 | 489 | 4 | 333 | 110 | 163 | 17 | Rp3/8" | 75 | 25 | 16 | 60 | 116 | 140 | 1.2 kN | 105.113.124.090.080. |
| 90 | 40 | 559 | 4 | 393 | 110 | 193 | 17 | Rp3/8" | 75 | 25 | 16 | 60 | 116 | 140 | 1.2 kN | 105.113.124.090.090. |
| 100 | 30 | 569 | 4 | 393 | 110 | 193 | 17 | Rp3/8" | 75 | 25 | 16 | 60 | 116 | 140 | 1.2 kN | 105.113.124.090.100. |
| 110 | 40 | 619 | 4 | 433 | 110 | 213 | 17 | Rp3/8" | 75 | 25 | 16 | 60 | 116 | 140 | 1.2 kN | 105.113.124.090.110. |

S = retract, WS = working stroke, *at 1 bar pressure

Complete the Order-number:

Example: **105.113.124.090.080.???** No. Force connection (S.5).?? No. Cylinder rod (S.6)

We reserve the right to make changes which are in the interest of technical progress.

© by WMA Schmidt & Bittner GmbH, Baumwaide 23, D-74360 Illfeld-Auenstein, Tel. +49 7062 9066-0, Fax +49 7062 9066-20

info@wma-sb.de or wma-sb@t-online.de, http://www.wma-sb.de

Cylinder-lateral flange-2



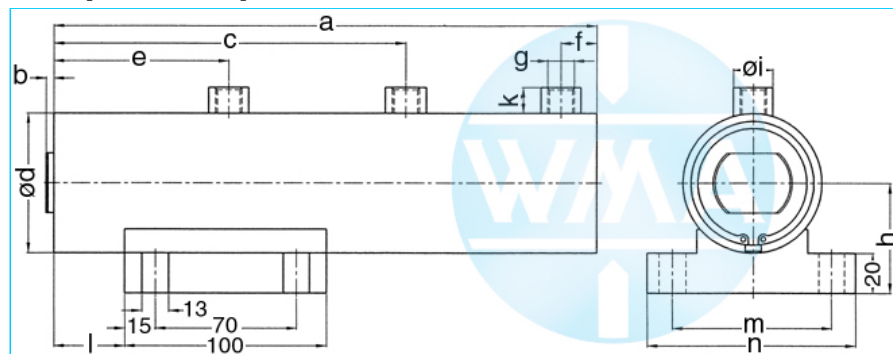
Welding cylinder

wide lateral flange, retract and working stroke

Version: 2011-01

unilateral air connection,
double-stage pressurized

damped independent of stroke



Nominal size 044

| S | WS | a | b | c | d | e | f | g | h | i | k | l | m | n | Force* | Order-number |
|-----|----|-----|---|-----|----|-----|----|--------|----|----|----|----|----|-----|---------|----------------------|
| 50 | 30 | 369 | 4 | 254 | 55 | 126 | 18 | Rp1/4" | 45 | 20 | 13 | 35 | 80 | 105 | 0.28 kN | 105.113.125.044.050. |
| 60 | 20 | 379 | 4 | 254 | 55 | 126 | 18 | Rp1/4" | 45 | 20 | 13 | 35 | 80 | 105 | 0.28 kN | 105.113.125.044.060. |
| 70 | 30 | 429 | 4 | 294 | 55 | 146 | 18 | Rp1/4" | 45 | 20 | 13 | 35 | 80 | 105 | 0.28 kN | 105.113.125.044.070. |
| 80 | 20 | 439 | 4 | 294 | 55 | 146 | 18 | Rp1/4" | 45 | 20 | 13 | 35 | 80 | 105 | 0.28 kN | 105.113.125.044.080. |
| 90 | 40 | 509 | 4 | 354 | 55 | 176 | 18 | Rp1/4" | 45 | 20 | 13 | 35 | 80 | 105 | 0.28 kN | 105.113.125.044.090. |
| 100 | 30 | 519 | 4 | 354 | 55 | 176 | 18 | Rp1/4" | 45 | 20 | 13 | 35 | 80 | 105 | 0.28 kN | 105.113.125.044.100. |
| 110 | 40 | 569 | 4 | 394 | 55 | 196 | 18 | Rp1/4" | 45 | 20 | 13 | 35 | 80 | 105 | 0.28 kN | 105.113.125.044.110. |

S = retract, WS = working stroke, *at 1 bar pressure

Nominal size 058

| S | WS | a | b | c | d | e | f | g | h | i | k | l | m | n | Force* | Order-number |
|-----|----|-----|---|-----|----|-----|----|--------|----|----|----|----|----|-----|--------|----------------------|
| 50 | 30 | 369 | 4 | 254 | 70 | 126 | 18 | Rp1/4" | 55 | 20 | 13 | 35 | 80 | 105 | 0.5 kN | 105.113.125.058.050. |
| 60 | 20 | 379 | 4 | 254 | 70 | 126 | 18 | Rp1/4" | 55 | 20 | 13 | 35 | 80 | 105 | 0.5 kN | 105.113.125.058.060. |
| 70 | 30 | 429 | 4 | 294 | 70 | 146 | 18 | Rp1/4" | 55 | 20 | 13 | 35 | 80 | 105 | 0.5 kN | 105.113.125.058.070. |
| 80 | 20 | 439 | 4 | 294 | 70 | 146 | 18 | Rp1/4" | 55 | 20 | 13 | 35 | 80 | 105 | 0.5 kN | 105.113.125.058.080. |
| 90 | 40 | 509 | 4 | 354 | 70 | 176 | 18 | Rp1/4" | 55 | 20 | 13 | 35 | 80 | 105 | 0.5 kN | 105.113.125.058.090. |
| 100 | 30 | 519 | 4 | 354 | 70 | 176 | 18 | Rp1/4" | 55 | 20 | 13 | 35 | 80 | 105 | 0.5 kN | 105.113.125.058.100. |
| 110 | 40 | 569 | 4 | 394 | 70 | 196 | 18 | Rp1/4" | 55 | 20 | 13 | 35 | 80 | 105 | 0.5 kN | 105.113.125.058.110. |

S = retract, WS = working stroke, *at 1 bar pressure

Nominal size 070

| S | WS | a | b | c | d | e | f | g | h | i | k | l | m | n | Force* | Order-number |
|-----|----|-----|---|-----|----|-----|----|--------|----|----|----|----|-----|-----|---------|----------------------|
| 50 | 30 | 419 | 4 | 293 | 90 | 143 | 17 | Rp3/8" | 60 | 25 | 16 | 60 | 116 | 140 | 0.72 kN | 105.113.125.070.050. |
| 60 | 20 | 429 | 4 | 293 | 90 | 143 | 17 | Rp3/8" | 60 | 25 | 16 | 60 | 116 | 140 | 0.72 kN | 105.113.125.070.060. |
| 70 | 30 | 479 | 4 | 333 | 90 | 163 | 17 | Rp3/8" | 60 | 25 | 16 | 60 | 116 | 140 | 0.72 kN | 105.113.125.070.070. |
| 80 | 20 | 489 | 4 | 333 | 90 | 163 | 17 | Rp3/8" | 60 | 25 | 16 | 60 | 116 | 140 | 0.72 kN | 105.113.125.070.080. |
| 90 | 40 | 559 | 4 | 393 | 90 | 193 | 17 | Rp3/8" | 60 | 25 | 16 | 60 | 116 | 140 | 0.72 kN | 105.113.125.070.090. |
| 100 | 30 | 569 | 4 | 393 | 90 | 193 | 17 | Rp3/8" | 60 | 25 | 16 | 60 | 116 | 140 | 0.72 kN | 105.113.125.070.100. |
| 110 | 40 | 619 | 4 | 433 | 90 | 213 | 17 | Rp3/8" | 60 | 25 | 16 | 60 | 116 | 140 | 0.72 kN | 105.113.125.070.110. |

S = retract, WS = working stroke, *at 1 bar pressure

Complete the Order-number:

Example: **105.113.125.044.060.???** No. Force connection (S.5)?? No. Cylinder rod (S.6)

We reserve the right to make changes which are in the interest of technical progress.

© by WMA Schmidt & Bittner GmbH, Baumwaide 23, D-74360 Illfeld-Auenstein, Tel. +49 7062 9066-0, Fax +49 7062 9066-20

info@wma-sb.de or wma-sb@t-online.de, http://www.wma-sb.de

Cylinder-lateral flange-3



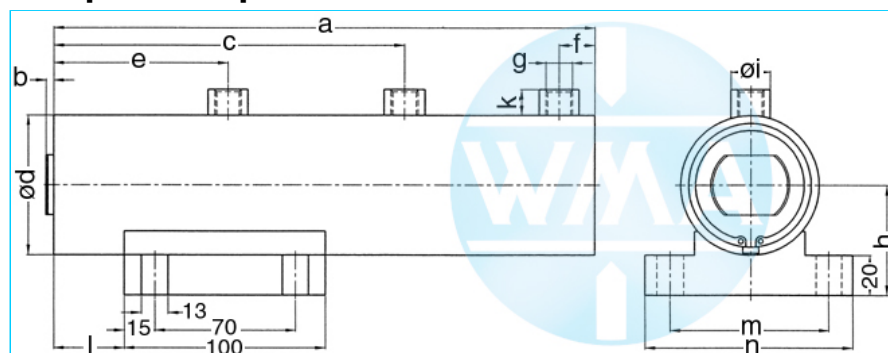
Welding cylinder

wide lateral flange, retract and working stroke

Version: 2011-01

unilateral air connection,
double-stage pressurized

damped independent of stroke



Nominal size 080

| S | WS | a | b | c | d | e | f | g | h | i | k | l | m | n | Force* | Order-number |
|-----|----|-----|---|-----|-----|-----|----|--------|----|----|----|----|-----|-----|---------|----------------------|
| 50 | 30 | 419 | 4 | 293 | 100 | 143 | 17 | Rp3/8" | 65 | 25 | 16 | 60 | 116 | 140 | 0.95 kN | 105.113.125.080.050. |
| 60 | 20 | 429 | 4 | 293 | 100 | 143 | 17 | Rp3/8" | 65 | 25 | 16 | 60 | 116 | 140 | 0.95 kN | 105.113.125.080.060. |
| 70 | 30 | 479 | 4 | 333 | 100 | 163 | 17 | Rp3/8" | 65 | 25 | 16 | 60 | 116 | 140 | 0.95 kN | 105.113.125.080.070. |
| 80 | 20 | 489 | 4 | 333 | 100 | 163 | 17 | Rp3/8" | 65 | 25 | 16 | 60 | 116 | 140 | 0.95 kN | 105.113.125.080.080. |
| 90 | 40 | 559 | 4 | 393 | 100 | 193 | 17 | Rp3/8" | 65 | 25 | 16 | 60 | 116 | 140 | 0.95 kN | 105.113.125.080.090. |
| 100 | 30 | 569 | 4 | 393 | 100 | 193 | 17 | Rp3/8" | 65 | 25 | 16 | 60 | 116 | 140 | 0.95 kN | 105.113.125.080.100. |
| 110 | 40 | 619 | 4 | 433 | 100 | 213 | 17 | Rp3/8" | 65 | 25 | 16 | 60 | 116 | 140 | 0.95 kN | 105.113.125.080.110. |

S = retract, WS = working stroke, *at 1 bar pressure

Nominal size 090

| S | WS | a | b | c | d | e | f | g | h | i | k | l | m | n | Force* | Order-number |
|-----|----|-----|---|-----|-----|-----|----|--------|----|----|----|----|-----|-----|--------|----------------------|
| 50 | 30 | 419 | 4 | 293 | 110 | 143 | 17 | Rp3/8" | 75 | 25 | 16 | 60 | 116 | 140 | 1.2 kN | 105.113.125.090.050. |
| 60 | 20 | 429 | 4 | 293 | 110 | 143 | 17 | Rp3/8" | 75 | 25 | 16 | 60 | 116 | 140 | 1.2 kN | 105.113.125.090.060. |
| 70 | 30 | 479 | 4 | 333 | 110 | 163 | 17 | Rp3/8" | 75 | 25 | 16 | 60 | 116 | 140 | 1.2 kN | 105.113.125.090.070. |
| 80 | 20 | 489 | 4 | 333 | 110 | 163 | 17 | Rp3/8" | 75 | 25 | 16 | 60 | 116 | 140 | 1.2 kN | 105.113.125.090.080. |
| 90 | 40 | 559 | 4 | 393 | 110 | 193 | 17 | Rp3/8" | 75 | 25 | 16 | 60 | 116 | 140 | 1.2 kN | 105.113.125.090.090. |
| 100 | 30 | 569 | 4 | 393 | 110 | 193 | 17 | Rp3/8" | 75 | 25 | 16 | 60 | 116 | 140 | 1.2 kN | 105.113.125.090.100. |
| 110 | 40 | 619 | 4 | 433 | 110 | 213 | 17 | Rp3/8" | 75 | 25 | 16 | 60 | 116 | 140 | 1.2 kN | 105.113.125.090.110. |

S = retract, WS = working stroke, *at 1 bar pressure

Complete the Order-number:

Example: **105.113.125.090.080.???** No. Force connection (S.5).?? No. Cylinder rod (S.6)

We reserve the right to make changes which are in the interest of technical progress.

© by WMA Schmidt & Bittner GmbH, Baumwaide 23, D-74360 Illfeld-Auenstein, Tel. +49 7062 9066-0, Fax +49 7062 9066-20

info@wma-sb.de or wma-sb@t-online.de, <http://www.wma-sb.de>

Cylinder-lateral flange-4



Welding cylinder

wide lateral flange, retract and working stroke

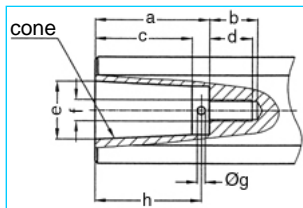
Version: 2011-01

Force connection

Write the number (with point) from the selected Force connection direct behind the Order-number of the cylinder and complete the whole Order-number with the chosen number of the Cylinder rod.

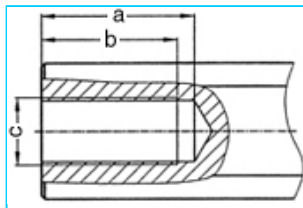
Example: 105.113.125.044.060.201.?? No. Cylinder rod (S.6)

Internal cone



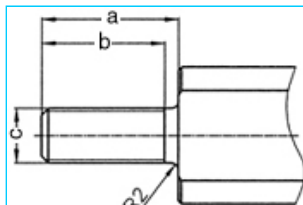
| a | b | c | d | e | cone | f | g | h | No. |
|----|----|------|----|--------|------|----|---|----|------|
| 33 | 18 | 27.0 | 16 | 17.780 | MK2 | M8 | 3 | 30 | 101. |
| 42 | 18 | 35.5 | 16 | 21.806 | MK3 | M8 | 3 | 39 | 102. |
| 42 | 18 | 35.5 | 16 | 21.750 | 1:10 | M8 | 3 | 39 | 103. |

Female thread



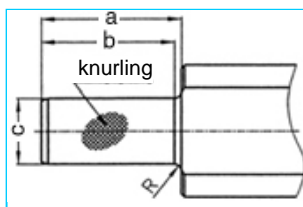
| a | b | c | No. |
|----|----|-----------|------|
| 45 | 40 | M20 x 1.5 | 201. |
| 62 | 58 | M20 x 1.5 | 202. |

Male thread



| a | b | c | No. |
|----|----|-----------|------|
| 40 | 36 | M16 x 1.5 | 301. |
| 40 | 36 | M20 x 1.5 | 302. |
| 40 | 36 | M24 x 1.5 | 303. |

Knurl



| a | b | c | Knurling | R | No. |
|----|----|------------------|----------------|---|------|
| 42 | 40 | 20 ₁₇ | 1 x 0.2 DIN 82 | 2 | 401. |
| 42 | 42 | 25 ₁₇ | 1 x 0.2 DIN 82 | - | 402. |

We reserve the right to make changes which are in the interest of technical progress.

© by WMA Schmidt & Bittner GmbH, Baumwaide 23, D-74360 Illfeld-Auenstein, Tel. +49 7062 9066-0, Fax +49 7062 9066-20

info@wma-sb.de or wma-sb@t-online.de, <http://www.wma-sb.de>

Cylinder-lateral flange-5



Welding cylinder

wide lateral flange, retract and working stroke

Version: 2011-01

Cylinder rod

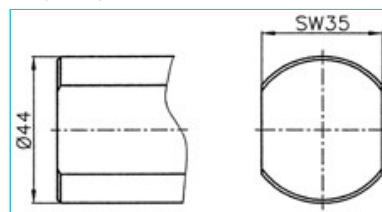
flattened and rotation locked

Complete the Order-number with the selected number of the chosen cylinder rod.

Example: 105.113.125.044.060.201.02

For piston diameter

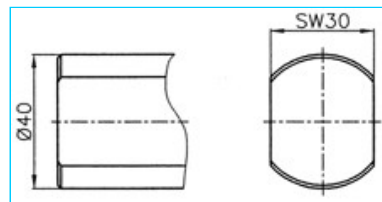
70, 80, 90



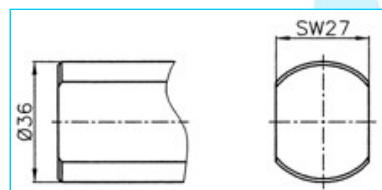
No. 00

For piston diameter

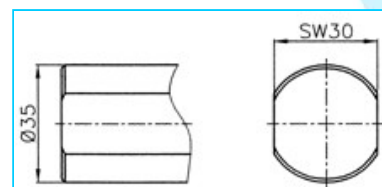
38, 44, 58



No. 01



No. 02



No. 03

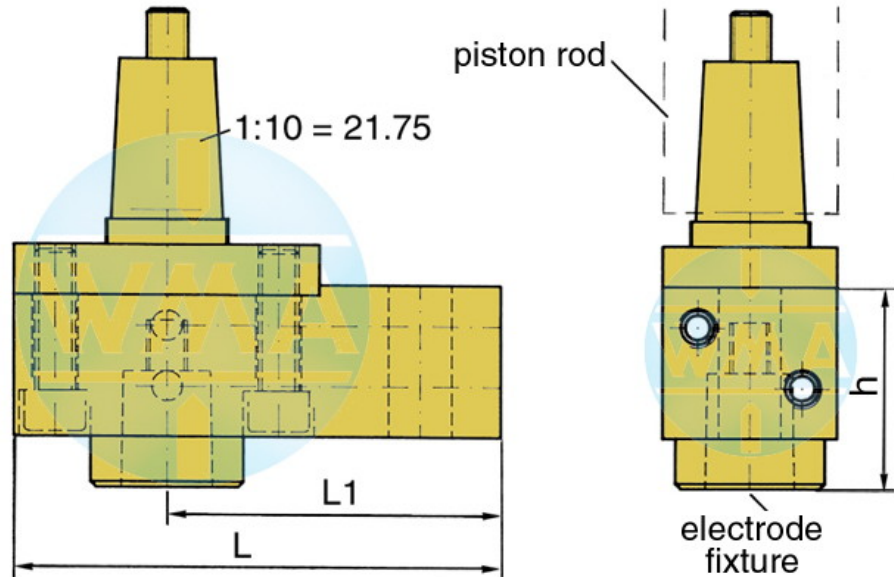


Welding cylinder

wide lateral flange, retract and working stroke

Version: 2011-01

Electrode holder for welding cylinders



| Piston Ø | L | L1 | Water connection |
|----------|-----|----|------------------------|
| 38 | 95 | 65 | possible on both sides |
| 44 | 95 | 65 | possible on both sides |
| 58 | 110 | 80 | possible on both sides |
| 70 | 110 | 80 | possible on both sides |
| 80 | 120 | 90 | possible on both sides |
| 90 | 120 | 90 | possible on both sides |

Available cones for the electrode fixture

| cone | Ø d | h |
|--------|--------|----|
| 1 : 10 | 9.8 | 39 |
| 1 : 10 | 12.0 | 39 |
| 1 : 10 | 12.7 | 39 |
| 1 : 10 | 15.5 | 39 |
| 1 : 10 | 15.75 | 39 |
| 1 : 10 | 17.75 | 50 |
| 1 : 10 | 19.0 | 50 |
| MK 1 | 12.065 | 39 |
| MK 2 | 17.781 | 50 |

Further cones available on request!

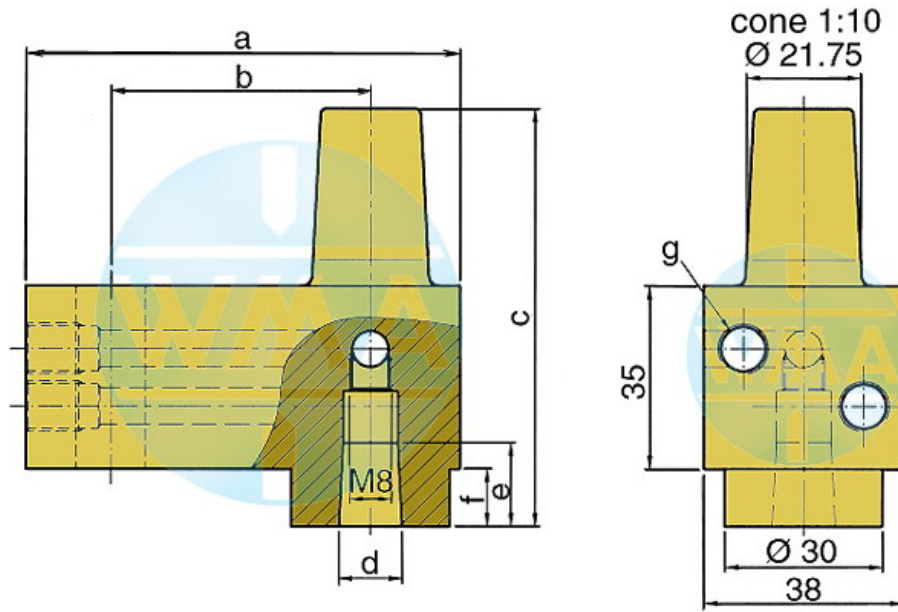


Welding cylinder

wide lateral flange, retract and working stroke

Version: 2011-01

Electrode holder



This electrode holder is main used in welding machines with variable and fast-change electrode shafts.

| a | b | c | d | e | f | g | Order-number | |
|-----|----|----|------------|----|----|----|-------------------|---------------|
| 82 | 49 | 80 | 1:10=12.00 | 16 | 16 | 11 | M10 x 1 or R 1/8" | L60051080-000 |
| 82 | 49 | 80 | MK1 | 16 | 16 | 11 | M10 x 1 or R 1/8" | L60091080-000 |
| 82 | 49 | 80 | 1:10=15.75 | 20 | 20 | 11 | M10 x 1 or R 1/8" | L60131080-001 |
| 82 | 49 | 80 | 1:10=18 | 20 | 20 | 11 | M10 x 1 or R 1/8" | L60061080-000 |
| 82 | 49 | 80 | MK2 | 20 | 20 | 11 | M10 x 1 or R 1/8" | L60101080-000 |
| 82 | 49 | 90 | 1:10=21.75 | 31 | 31 | 21 | M10 x 1 or R 1/8" | L60221080-000 |
| 82 | 49 | 90 | MK3 | 31 | 31 | 21 | M10 x 1 or R 1/8" | L60111080-000 |
| 97 | 64 | 90 | 1:10=21.75 | 31 | 31 | 21 | M10 x 1 or R 1/8" | L60221090-000 |
| 97 | 64 | 90 | MK3 | 31 | 31 | 21 | M10 x 1 or R 1/8" | L60111090-000 |
| 107 | 74 | 90 | 1:10=21.75 | 31 | 31 | 21 | M10 x 1 or R 1/8" | L60221090-001 |
| 107 | 74 | 90 | MK3 | 31 | 31 | 21 | M10 x 1 or R 1/8" | L60111090-001 |

We reserve the right to make changes which are in the interest of technical progress.

© by WMA Schmidt & Bittner GmbH, Baumwaide 23, D-74360 Illfeld-Auenstein, Tel. +49 7062 9066-0, Fax +49 7062 9066-20

info@wma-sb.de or wma-sb@t-online.de, <http://www.wma-sb.de>

Cylinder-lateral flange-8