

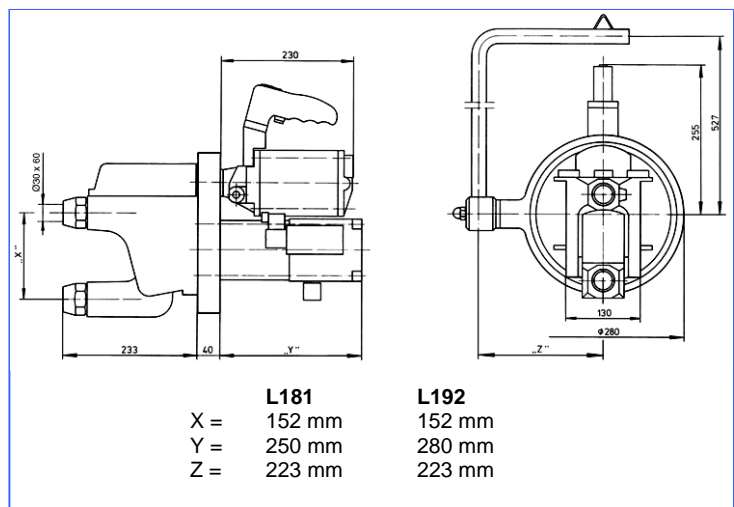


# L 181 - 192

Version: 01-2011

## pneumatically operated, water cooled\* X spot welding gun

- compact design
- double stroke mechanism
- transformer, fully encapsulated in plastic
- contact pressure function in the handle
- cardan suspension
- gun with 4 m power supply cable and switch
- low-maintenance design



	L 181	L 192
Welding performance* (with a short depth of throat)	3 + 3 mm	3 + 3 mm
Welding performance* (with a long depth of throat)	1.5 + 1.5 mm	2 + 2 mm
Nominal capacity (at 50% ED)	14 kVA	22 kVA
Supply power	33.6 kVA	47.4 kVA
Connection section	6 mm <sup>2</sup>	16 mm <sup>2</sup>
Fuse, delayed action	35 A	63 A
max. welding current	10.4 kA	13.2 kA
Electrode force at 6 bar	345 daN	345 daN
Vertical arm spacing**	117 mm	117 mm
Depth of throat	180 mm	180 mm
Weight (without electrode arms)	36 kg	36 kg
Order-number	XK3.107.C02	XK3.112.C00

### Standard design

\* The welding performance data quoted refer to steel, non-continuous machining.

\*\* Larger vertical arm spaces are possible at an additional charge.

Different welding controls can be used.

\*This kit does not include a water chiller!

**WMA is general distributor for NIMAK welding machines in Baden-Wuerttemberg**

We reserve the right to make changes which are in the interest of technical progress.

© by WMA Schmidt & Bittner GmbH, Baumwaide 23, D-74360 Illfeld-Auenstein, Tel. +49 7062 9066-0, Fax +49 7062 9066-20

info@wma-sb.de or wma-sb@t-online.de, http://www.wma-sb.de

XL181-192-1



# L 181 - 192

Version: 01-2011

## Optional hand grips for spot welding guns

Standard grip



integrated grip with two additional switches



Hand grip with digital switch



Optional locking lever



We reserve the right to make changes which are in the interest of technical progress.

© by WMA Schmidt & Bittner GmbH, Baumwaide 23, D-74360 Illfeld-Auenstein, Tel. +49 7062 9066-0, Fax +49 7062 9066-20  
info@wma-sb.de or wma-sb@t-online.de, <http://www.wma-sb.de>

XL181-192-2