

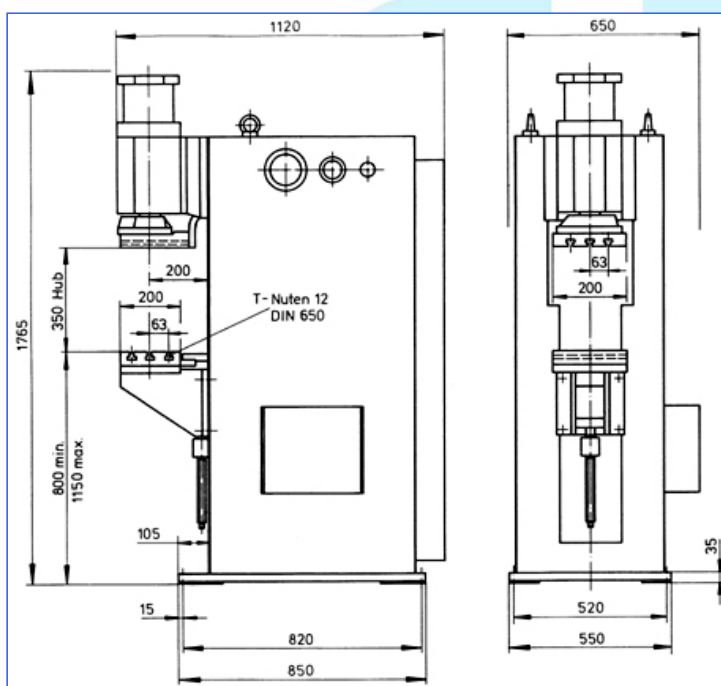


BMP 20/80-260

Version: 01-2011

Pneumatically operated, water cooled* stationary projection welding machines

- vertical arm spacing can be steplessly adjusted with ratchet
- electrode force can be regulated with a switch
- with a compressed air maintenance unit
- with main switch
- separately adjustable cooling water circuits with a flow and temperature display
- 2-hand start control panel built on the front of the pressing plate



	BMP	20/80	20/100	20/120	20/125	20/150	20/160	20/200	20/250
Nom. capacity (at 50% ED)	kVA	80	100	120	125	150	160	200	250
Connection section	mm ²	70	95		120	185		240	
Fuse, delayed action	A	160	200		250	315		400	
max. welding current	kA	48	57,6		66,4	75,2		84	
Electrode force	daN	2000	2000	2000	2000	2000	2000	2000	2000
Depth of throat	mm	200	200	250	200	200	250	200	250
Working stroke	mm	100	100	100	100	100	100	100	100
Order-number	X00.	128.C20	130.C20	154.C02	131.C20	133.C01	134.C06	135.C01	136.C01

Standard design

Different welding controls can be used.

*This kit does not include a water chiller!

WMA is general distributor for NIMAK welding machines in Baden-Wuerttemberg.

We reserve the right to make changes which are in the interest of technical progress.

© by WMA Schmidt & Bittner GmbH, Baumwaide 23, D-74360 Ilfeld-Auenstein, Tel. +49 7062 9066-0, Fax +49 7062 9066-20
 info@wma-sb.de or wma-sb@t-online.de, <http://www.wma-sb.de>



BMP 20/80-260

Version: 01-2011

Mid frequency technology

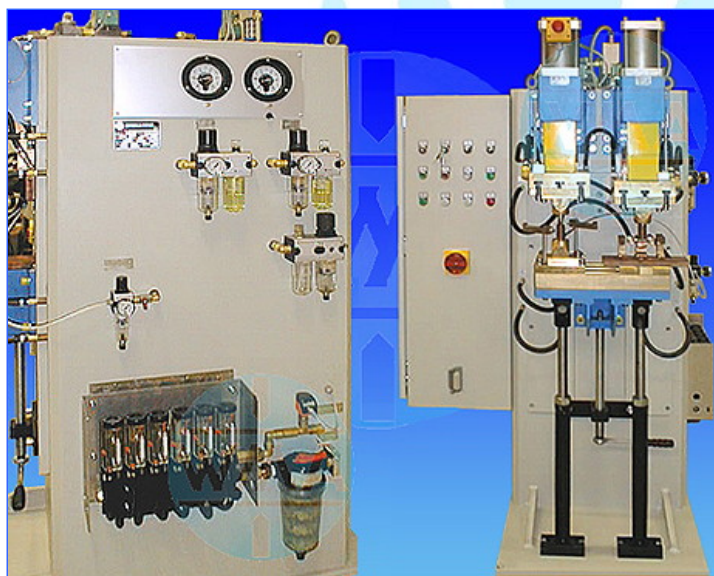
	BMP 20/	2x130 MF	4x130 MF	260 MF	2x260 MF
Nom. capacity (at 50% ED)	kVA	2 x 130	4 x 130	260	2 x 260
Connection section	mm ²				
Fuse, delayed action	A				
max. welding current	kA				
Electrode force	daN	2000	2000	2000	2000
Depth of throat	mm	250	250	250	250
Working stroke	mm	100	100	100	100
Order-number	XO3.	132.C02	132.C03	136.N01	136.N04

Standard design

Different welding controls can be used.

*This kit does not include a water chiller!

Double head performance with different pressure circuits and chilled water filter



WMA is general distributor for NIMAK welding machines in Baden-Wuerttemberg.

We reserve the right to make changes which are in the interest of technical progress.

© by WMA Schmidt & Bittner GmbH, Baumwaide 23, D-74360 Illfeld-Auenstein, Tel. +49 7062 9066-0, Fax +49 7062 9066-20
info@wma-sb.de or wma-sb@t-online.de, <http://www.wma-sb.de>

BMP20-2

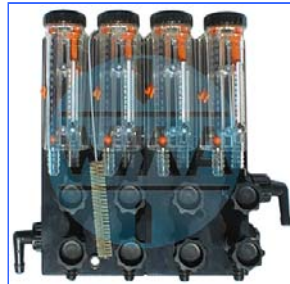


BMP 20/80-260

Version: 01-2011

**Options,
the following devices and equipments can be built on:**

Flow controls



Measuring devices



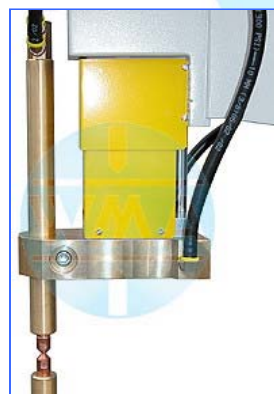
Water filters



Table height-adjustable
with threaded rod
and ratchet



Mounted
electrode holder



Supply cylinder
with hand wheel



Lower arm supports



We reserve the right to make changes which are in the interest of technical progress.

© by WMA Schmidt & Bittner GmbH, Baumwaide 23, D-74360 Illfeld-Auenstein, Tel. +49 7062 9066-0, Fax +49 7062 9066-20
info@wma-sb.de or wma-sb@t-online.de, <http://www.wma-sb.de>

BMP20-3