

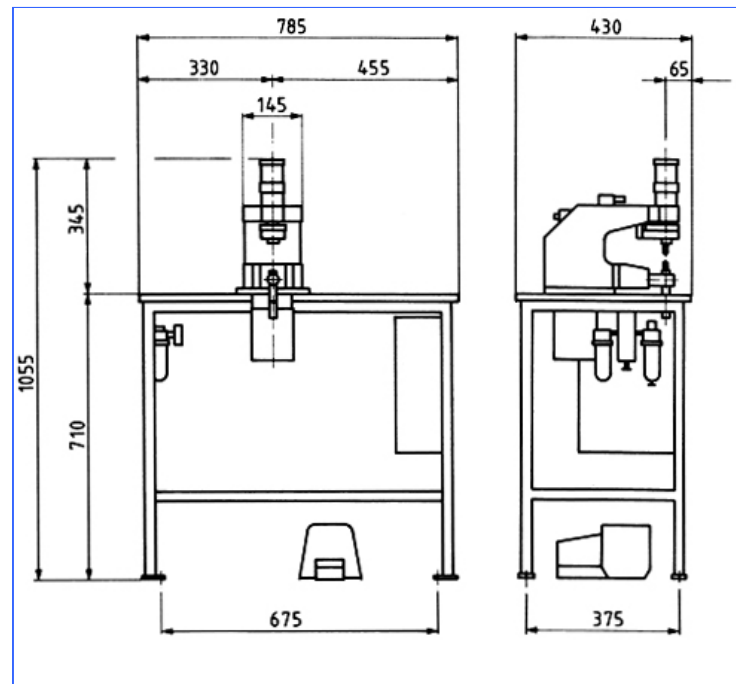


TPMP 2/8-90

Version: 01-2011

Pneumatically operated, water cooled* table spot welding machines in compact design

- single stroke mechanism
- with an attached compressed air maintenance unit
- one cylinder chamber can be switched off
- with a machine table and side rests
- with foot switch
- 3 meters power supply cable



	TPMP 2/8	TPMP 2/14	TPMP 2/90MF**
Welding performance*	1.5 + 1.5 mm	2 + 2 mm	
Nominal capacity	8 kVA (at 50% ED)	14 kVA (at 50% ED)	90 kVA (at 20% ED)
Supply power	18 kVA	31 kVA	
Connection section	2.5 mm ²	6 mm ²	
Fuse, delayed action	16 A	35 A	
max. welding current	8.2 kA	11.2 kA	
Electrode force	35 - 210 daN	35 - 210 daN	35 - 210 daN
Depth of throat	150 mm	150 mm	150 mm
Electrode stroke	25 mm	25 mm	25 mm
Order-number	XL0.116.C01	XL0.107.C01	XL0.130.C01

* The max. welding values quoted refer to sheet steel.

** MF = Mid frequency technology.

Different welding controls can be used.

*This kit does not include a water chiller!

WMA is general distributor for NIMAK welding machines in Baden-Wuerttemberg.

We reserve the right to make changes which are in the interest of technical progress.

© by WMA Schmidt & Bittner GmbH, Baumwaide 23, D-74360 Illfeld-Auenstein, Tel. +49 7062 9066-0, Fax +49 7062 9066-20
info@wma-sb.de or wma-sb@t-online.de, <http://www.wma-sb.de>

TPMP2-1

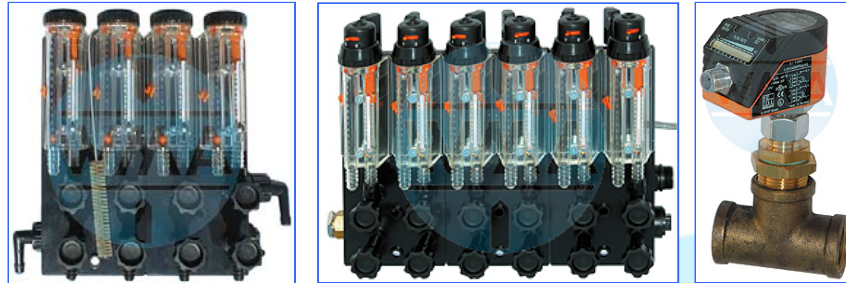


TPMP 2/8-90

Version: 01-2011

**Options,
the following devices and equipments can be built on:**

Flow controls



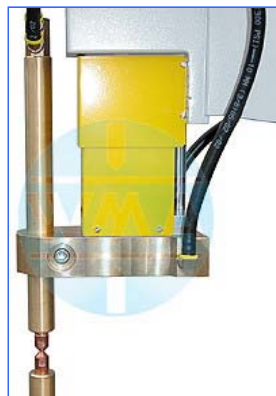
Pressure measuring instruments



Water filter



Mounted electrode holder



Supply cylinder with hand wheel

